

For Research Use Only

# CoraLite® Plus 488-conjugated PTDSS1 Recombinant antibody

Catalog Number: CL488-83421



## Basic Information

<b>Catalog Number:</b> CL488-83421	<b>GenBank Accession Number:</b> BC002376	<b>Purification Method:</b> Protein A purification
<b>Size:</b> 100ul , Concentration: 1000 µg/ml by Nanodrop;	<b>GeneID (NCBI):</b> 9791	<b>CloneNo.:</b> 240007G3
<b>Source:</b> Rabbit	<b>UNIPROT ID:</b> P48651	<b>Recommended Dilutions:</b> IF/ICC 1:50-1:500
<b>Isotype:</b> IgG	<b>Full Name:</b> phosphatidylserine synthase 1	<b>Excitation/Emission maxima wavelengths:</b> 493 nm / 522 nm
<b>Immunogen Catalog Number:</b> AG14170	<b>Calculated MW:</b> 473 aa, 56 kDa	

## Applications

<b>Tested Applications:</b> IF/ICC	<b>Positive Controls:</b> IF/ICC : HepG2 cells,
<b>Species Specificity:</b> human	

## Background Information

Phosphatidylserine Synthase-1 (PTDSS1 or PSS1) is one of two enzymes involved in the production of phosphatidylserine (PS), which is a quantitatively minor, but physiologically important phospholipid in mammalian cells (PMID: 24241535). Mice lacking either Ptdss1 or Ptdss2 are viable, phenotypically normal and fertile, indicating that, in mice, PSS1 and PSS2 can compensate for each other (PMID: 18343815).

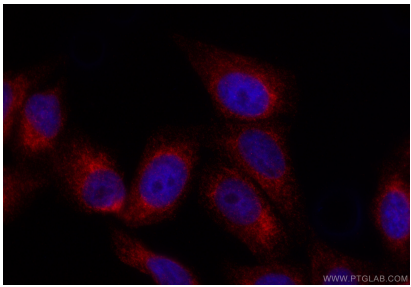
## Storage

**Storage:**  
Store at -20°C. Avoid exposure to light. Stable for one year after shipment.  
**Storage Buffer:**  
PBS with 50% Glycerol, 0.05% Proclin300, 0.5% BSA, pH 7.3.  
**Aliquoting is unnecessary for -20°C storage**

For technical support and original validation data for this product please contact:  
T: 1 (888) 4PTGLAB (1-888-478-4522) (toll free in USA), or 1(312) 455-8498 (outside USA)  
E: [proteintech@ptglab.com](mailto:proteintech@ptglab.com)  
W: [ptglab.com](http://ptglab.com)

This product is exclusively available under Proteintech Group brand and is not available to purchase from any other manufacturer.

Selected Validation Data



N/A