

For Research Use Only

# CoraLite® Plus 488-conjugated Ferritin heavy chain Recombinant monoclonal antibody



Catalog Number: **CL488-83428**

Featured Product

## Basic Information

Catalog Number:

CL488-83428

Size:

100ul , Concentration: 1000 ug/ml by Nanodrop;

Source:

Rabbit

Isotype:

IgG

Immunogen Catalog Number:

AG2290

GenBank Accession Number:

BC000857

GeneID (NCBI):

2495

UNIPROT ID:

P02794

Full Name:

ferritin, heavy polypeptide 1

Calculated MW:

183 aa, 21 kDa

Observed MW:

21 kDa

Purification Method:

Protein A purification

CloneNo.:

230312F3

Recommended Dilutions:

IF/ICC: 1:50-1:500

Excitation/Emission maxima wavelengths:

493 nm / 522 nm

## Applications

Tested Applications:

IF/ICC

Species Specificity:

human

Positive Controls:

IF/ICC : HeLa cells,

## Background Information

Ferritin heavy chain(FTH1, ferritin, heavy polypeptide 1 ), as a 21 kDa subunit of the ferritin complex, exhibits ferroxidase activity, which serves an essential role in catalyzing the conversion of the ferrous ions (Fe<sup>2+</sup>) to the ferric form (Fe<sup>3+</sup>). FTH1 regulates angiogenesis during inflammation and malignancy by binding to high molecular weight kininogen (HKA) and blocking its anti-angiogenic activity on endothelial cells in vitro and in vivo(PMID: 33260500). FTH1 has been shown to protect proximal tube epithelial cells and kidneys against the activity of free iron in reactive oxygen species generation. FTH1 plays an important role in the maintenance of the cellular iron balance in ferroptosis.

## Storage

Storage:

Store at -20°C. Avoid exposure to light. Stable for one year after shipment.

Storage Buffer:

PBS with 50% glycerol, 0.05% Proclin300, 0.5% BSA, pH7.3

Aliquoting is unnecessary for -20°C storage

For technical support and original validation data for this product please contact:

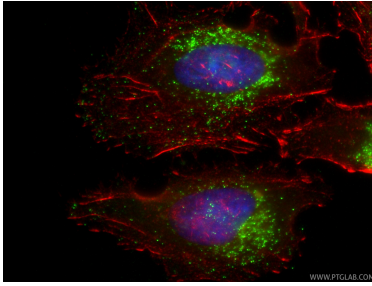
T: 1 (888) 4PTGLAB (1-888-478-4522) (toll free in USA), or 1(312) 455-8498 (outside USA)

E: [proteintech@ptglab.com](mailto:proteintech@ptglab.com)  
W: [ptglab.com](http://ptglab.com)

This product is exclusively available under Proteintech Group brand and is not available to purchase from any other manufacturer.

---

## Selected Validation Data



Immunofluorescent analysis of (-20°C Ethanol) fixed HeLa cells using CoraLite® Plus 488 Ferritin heavy chain antibody (CL488-83428, Clone: 230312F3 ) at dilution of 1:200, CL594-phalloidin (red).