

For Research Use Only

# CoraLite® Plus 488-conjugated HTRA2 Recombinant antibody

Catalog Number: CL488-83492-7



## Basic Information

<b>Catalog Number:</b> CL488-83492-7	<b>GenBank Accession Number:</b> BC000096	<b>Purification Method:</b> Protein A purification
<b>Size:</b> 100ul , Concentration: 1000 ug/ml by Nanodrop;	<b>GeneID (NCBI):</b> 27429	<b>CloneNo.:</b> 240496D1
<b>Source:</b> Rabbit	<b>UNIPROT ID:</b> O43464	<b>Recommended Dilutions:</b> IF/ICC 1:50-1:500
<b>Isotype:</b> IgG	<b>Full Name:</b> HtrA serine peptidase 2	<b>Excitation/Emission maxima wavelengths:</b> 493 nm / 522 nm
<b>Immunogen Catalog Number:</b> AG8455	<b>Calculated MW:</b> 49 kDa	
	<b>Observed MW:</b> 36 kDa	

## Applications

<b>Tested Applications:</b> IF/ICC	<b>Positive Controls:</b> IF/ICC : HepG2 cells,
<b>Species Specificity:</b> human	

## Background Information

HTRA2(High temperature requirement protein A2) is also named as OMI, PRSS25 and belongs to the peptidase S1B family. HTRA2 normally exists in the mitochondria, can cause MMP3 activation in the cytosol under a cell stress condition, which can ultimately lead to demise of dopaminergic neuronal cells(PMID: 22265821). It inhibits mitochondrial superoxide generation, stabilizes mitochondrial membrane potential, and prevents apoptosis at baseline and in response to extracellular inducers of mitochondrial stress(PMID: 18772386). This protein has 4 isoforms produced by alternative splicing.

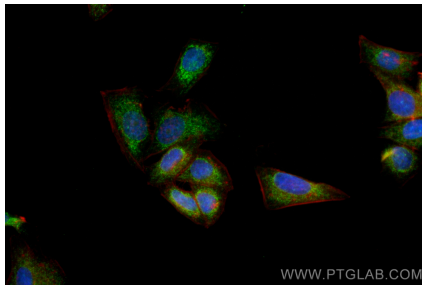
## Storage

**Storage:**  
Store at -20°C. Avoid exposure to light. Stable for one year after shipment.  
**Storage Buffer:**  
PBS with 50% Glycerol, 0.05% Proclin300, 0.5% BSA, pH 7.3.  
**Aliquoting is unnecessary for -20°C storage**

For technical support and original validation data for this product please contact:  
T: 1 (888) 4PTGLAB (1-888-478-4522) (toll free in USA), or 1(312) 455-8498 (outside USA)  
E: proteintech@ptglab.com  
W: ptglab.com

This product is exclusively available under Proteintech Group brand and is not available to purchase from any other manufacturer.

## Selected Validation Data



Immunofluorescent analysis of (4% PFA) fixed HepG2 cells using Coralite® Plus 488 HTRA2 antibody (CL488-83492-7, Clone: 240496D1 ) at dilution of 1:200.