

For Research Use Only

CoraLite® Plus 488-conjugated SOD2 Recombinant antibody

Catalog Number: CL488-83519-3



Basic Information

| | | |
|--|--|---|
| Catalog Number: CL488-83519-3 | GenBank Accession Number: BC016934 | Purification Method: Protein A purification |
| Size: 100ul , Concentration: 1000 ug/ml by Nanodrop; | GeneID (NCBI): 6648 | CloneNo.: 240462D8 |
| Source: Rabbit | UNIPROT ID: P04179 | Recommended Dilutions: IF/ICC 1:50-1:500 |
| Isotype: IgG | Full Name: superoxide dismutase 2, mitochondrial | Excitation/Emission maxima wavelengths: 493 nm / 522 nm |
| Immunogen Catalog Number: AG21388 | Calculated MW: 25 kDa | |
| | Observed MW: 25 kDa | |

Applications

| | |
|--|--|
| Tested Applications: IF/ICC | Positive Controls: IF/ICC : HUVEC cells, |
| Species Specificity: human, mouse, rat | |

Background Information

SOD2(superoxide dismutase 2, mitochondrial) is also named as IPOB, MNSOD, SODM, Mn-SOD and belongs to the iron/manganese superoxide dismutase family. It is a marker of mitochondria, which is restricted to the perinuclear area in a cell with aggregate formation of mutant SOD1(PMID:12659845). It functions as the first line of antioxidant defense against highly reactive superoxide radicals and it appears to be early predictors for survival in septic patients with MIF(PMID:20863520). It has 2 isoforms with the molecular weight of 25 kDa and 21 kDa.

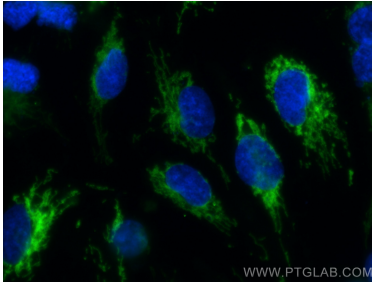
Storage

Storage:
Store at -20°C. Avoid exposure to light. Stable for one year after shipment.
Storage Buffer:
PBS with 50% Glycerol, 0.05% Proclin300, 0.5% BSA, pH 7.3.
Aliquoting is unnecessary for -20°C storage

For technical support and original validation data for this product please contact:
T: 1 (888) 4PTGLAB (1-888-478-4522) (toll free in USA), or 1(312) 455-8498 (outside USA)
E: proteintech@ptglab.com
W: ptglab.com

This product is exclusively available under Proteintech Group brand and is not available to purchase from any other manufacturer.

Selected Validation Data



Immunofluorescent analysis of (-20°C Methanol) fixed HUVEC cells using CoraLite® Plus 488 SOD2 antibody (CL488-83519-3, Clone: 240462D8) at dilution of 1:200.