

For Research Use Only

CoraLite® Plus 488-conjugated PSMD1 Recombinant antibody

Catalog Number: CL488-83521-4



Basic Information

Catalog Number:

CL488-83521-4

Size:

100ul , Concentration: 1000 ug/ml by
Nanodrop;

Source:

Rabbit

Isotype:

IgG

Immunogen Catalog Number:

AG12009

GenBank Accession Number:

BC094720

GeneID (NCBI):

5707

UNIPROT ID:

Q99460

Full Name:

proteasome (prosome, macropain)
26S subunit, non-ATPase, 1

Calculated MW:

953 aa, 106 kDa

Observed MW:

106 kDa

Purification Method:

Protein A purification

CloneNo.:

240458C9

Recommended Dilutions:

IF/ICC 1:50-1:500

Excitation/Emission maxima wavelengths:

493 nm / 522 nm

Applications

Tested Applications:

IF/ICC

Species Specificity:

human, mouse, rat

Positive Controls:

IF/ICC : HeLa cells,

Background Information

PSMD1 is a component of the 26S proteasome and contributes to its function regulation. PSMD1 performs an important role in the regulation of numerous cellular processes through the degradation of proteins targeted for breakdown through ubiquitin. PSMD1 has been found to be closely related to a variety of cancers such as lung adenocarcinoma and breast cancer.

Storage

Storage:

Store at -20°C. Avoid exposure to light. Stable for one year after shipment.

Storage Buffer:

PBS with 50% Glycerol, 0.05% Proclin300, 0.5% BSA, pH 7.3.

Aliquoting is unnecessary for -20°C storage

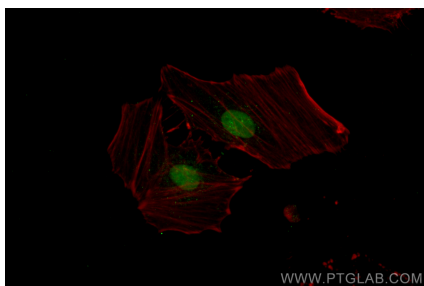
For technical support and original validation data for this product please contact:

T: 1 (888) 4PTGLAB (1-888-478-4522) (toll free
in USA), or 1(312) 455-8498 (outside USA)

E: proteintech@ptglab.com
W: ptglab.com

This product is exclusively available under Proteintech Group brand and is not available to purchase from any other manufacturer.

Selected Validation Data



Immunofluorescent analysis of (4% PFA) fixed HeLa cells using CoraLite® Plus 488 PSMD1 antibody (CL488-83521-4, Clone: 240458C9) at dilution of 1:200.