

For Research Use Only

# CoraLite® Plus 488-conjugated SYNPO2L Recombinant antibody

Catalog Number: CL488-83532-3



## Basic Information

Catalog Number:

CL488-83532-3

GenBank Accession Number:

BC142635

Purification Method:

Protein A purification

Size:

100ul , Concentration: 1000 ug/ml by  
Nanodrop;

GeneID (NCBI):

79933

CloneNo.:

240523F12

Source:

Rabbit

UNIPROT ID:

Q9H987

Recommended Dilutions:

IF/ICC 1:50-1:500

Isotype:

IgG

Full Name:

synaptopodin 2-like

Excitation/Emission maxima  
wavelengths:

493 nm / 522 nm

Immunogen Catalog Number:

AG34027

Calculated MW:

977 aa, 102 kDa

## Applications

Tested Applications:

IF/ICC

Positive Controls:

IF/ICC : HepG2 cells,

Species Specificity:

human

## Background Information

SYNPO2L belongs to the synaptopodin family and is an actin-associated protein that may play a role in modulating actin-based shape. SYNPO2L is involved in the positive regulation of Rho protein signal transduction and the positive regulation of stress fiber assembly. Loss-of-function variants in the SYNPO2L gene are associated with atrial fibrillation (PMID: 33768119).

## Storage

Storage:

Store at -20°C. Avoid exposure to light. Stable for one year after shipment.

Storage Buffer:

PBS with 50% Glycerol, 0.05% Proclin300, 0.5% BSA, pH 7.3.

Aliquoting is unnecessary for -20°C storage

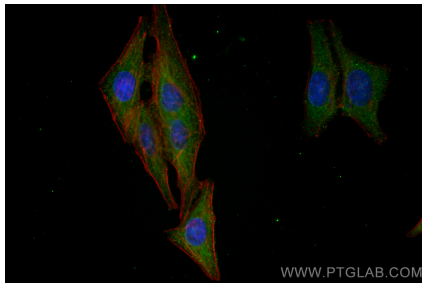
For technical support and original validation data for this product please contact:

T: 1 (888) 4PTGLAB (1-888-478-4522) (toll free  
in USA), or 1(312) 455-8498 (outside USA)

E: [proteintech@ptglab.com](mailto:proteintech@ptglab.com)  
W: [ptglab.com](http://ptglab.com)

This product is exclusively available under Proteintech Group brand and is not available to purchase from any other manufacturer.

## Selected Validation Data



Immunofluorescent analysis of (-20°C Ethanol)  
fixed HepG2 cells using CoraLite® Plus 488  
SYNPO2L antibody (CL488-83532-3, Clone:  
240523F12 ) at dilution of 1:200.