

For Research Use Only

# CoraLite® Plus 488-conjugated HIBCH Recombinant antibody

Catalog Number: CL488-83569



## Basic Information

<b>Catalog Number:</b> CL488-83569	<b>GenBank Accession Number:</b> BC067822	<b>Purification Method:</b> Protein A purification
<b>Size:</b> 100ul , Concentration: 1000 ug/ml by Nanodrop;	<b>GeneID (NCBI):</b> 26275	<b>CloneNo.:</b> 240590A3
<b>Source:</b> Rabbit	<b>UNIPROT ID:</b> Q6NVY1	<b>Recommended Dilutions:</b> IF/ICC: 1:50-1:500
<b>Isotype:</b> IgG	<b>Full Name:</b> 3-hydroxyisobutyryl-Coenzyme A hydrolase	<b>Excitation/Emission maxima wavelengths:</b> 493 nm / 522 nm
<b>Immunogen Catalog Number:</b> AG6149	<b>Calculated MW:</b> 43 kDa	
	<b>Observed MW:</b> 38 kDa	

## Applications

<b>Tested Applications:</b> IF/ICC	<b>Positive Controls:</b> IF/ICC : HeLa cells, HepG2 cells
<b>Species Specificity:</b> human, rat	

## Background Information

HIBCH belongs to the enoyl-CoA hydratase/isomerase family. HIBCH has two isoforms with MW 43 kDa and 38 kDa. It is highly expressed in the liver and kidney, also detected in the heart, muscle and brain (at protein level), but not detected in the lung. Hydrolyzes 3-hydroxyisobutyryl-CoA (HIBYL-CoA), a saline catabolite. Has high activity toward isobutyryl-CoA. Could be an isobutyryl-CoA dehydrogenase that functions in valine catabolism. Also hydrolyzes 3-hydroxypropanoyl-CoA (PMID: 8824301).

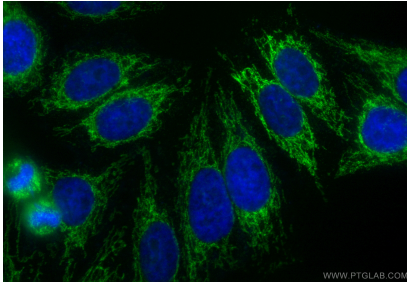
## Storage

**Storage:**  
Store at -20°C. Avoid exposure to light. Stable for one year after shipment.  
**Storage Buffer:**  
PBS with 50% glycerol, 0.05% Proclin300, 0.5% BSA, pH7.3  
**Aliquoting is unnecessary for -20°C storage**

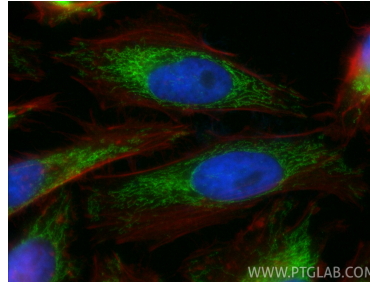
For technical support and original validation data for this product please contact:  
T: 1 (888) 4PTGLAB (1-888-478-4522) (toll free in USA), or 1(312) 455-8498 (outside USA)  
E: proteintech@ptglab.com  
W: ptglab.com

This product is exclusively available under Proteintech Group brand and is not available to purchase from any other manufacturer.

## Selected Validation Data



Immunofluorescent analysis of (4% PFA) fixed HepG2 cells using CoraLite® Plus 488 HIBCH antibody (CL488-83569, Clone: 240590A3 ) at dilution of 1:200.



Immunofluorescent analysis of (4% PFA) fixed HeLa cells using CoraLite® Plus 488 HIBCH antibody (CL488-83569, Clone: 240590A3 ) at dilution of 1:200, CL594-phalloidin (red).