

For Research Use Only

CoraLite® Plus 488-conjugated ATM Recombinant monoclonal antibody

Catalog Number: CL488-83608-5

Featured Product



Basic Information

Catalog Number:

CL488-83608-5

Size:

100ul , Concentration: 1000 ug/ml by

Nanodrop;

Source:

Rabbit

Isotype:

IgG

Immunogen Catalog Number:

AG25920

GenBank Accession Number:

BC137169

GeneID (NCBI):

472

UNIPROT ID:

Q13315

Full Name:

ataxia telangiectasia mutated

Observed MW:

310-350 kDa

Purification Method:

Protein A purification

CloneNo.:

240560F5

Recommended Dilutions:

IF/ICC: 1:50-1:500

Excitation/Emission maxima

wavelengths:

493 nm / 522 nm

Applications

Tested Applications:

IF/ICC

Species Specificity:

human, mouse

Positive Controls:

IF/ICC : HepG2 cells,

Background Information

The ATM protein is a member of the phosphatidylinositol 3-kinase family of proteins that respond to DNA damage by phosphorylating key substrates involved in DNA repair and/or cell cycle control. It is involved in mitogenic signal transduction, meiotic recombination, detection of DNA damage, and cell cycle control.

Storage

Storage:

Store at -20°C. Avoid exposure to light. Stable for one year after shipment.

Storage Buffer:

PBS with 50% glycerol, 0.05% Proclin300, 0.5% BSA, pH7.3

Aliquoting is unnecessary for -20°C storage

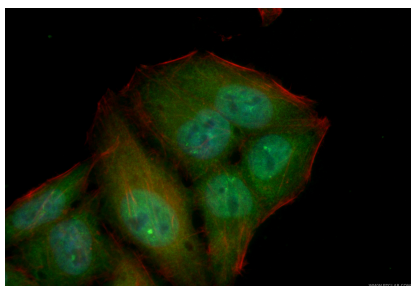
For technical support and original validation data for this product please contact:

T: 1 (888) 4PTGLAB (1-888-478-4522) (toll free
in USA), or 1(312) 455-8498 (outside USA)

E: proteintech@ptglab.com
W: ptglab.com

This product is exclusively available under Proteintech Group brand and is not available to purchase from any other manufacturer.

Selected Validation Data



Immunofluorescent analysis of (4% PFA) fixed HepG2 cells using CoraLite® Plus 488 ATM antibody (CL488-83608-5, Clone: 240560F5) at dilution of 1:200, CL594-phalloidin (red).