

For Research Use Only

CoraLite® Plus 488-conjugated TRIM46

Recombinant monoclonal antibody

Catalog Number: CL488-83614-2



Basic Information

Catalog Number:	GenBank Accession Number:	Purification Method:
CL488-83614-2	BC069416	Protein A purification
Size:	GeneID (NCBI):	CloneNo.:
100ul , Concentration: 1000 ug/ml by Nanodrop;	80128	240557E1
Source:	UNIPROT ID:	Recommended Dilutions:
Rabbit	Q7Z4K8	IF/ICC: 1:50-1:500
Isotype:	Full Name:	Excitation/Emission maxima wavelengths:
IgG	tripartite motif-containing 46	493 nm / 522 nm
Immunogen Catalog Number:	Calculated MW:	
AG15290	759 aa, 83 kDa	
	Observed MW:	
	83 kDa	

Applications

Tested Applications:	Positive Controls:
IF/ICC	IF/ICC : HepG2 cells,
Species Specificity:	
human, mouse, rat	

Background Information

Tripartite motif-containing protein 46 (TRIM46), a microtubule-associated protein, is involved in the formation of parallel microtubule bundles linked by cross-bridges in the proximal axon. Required for the uniform orientation and maintenance of the parallel microtubule fascicles, which are important for efficient cargo delivery and trafficking in axons. Thereby also required for proper axon specification, the establishment of neuronal polarity, and proper neuronal migration. The TRIM46 protein reported in previous studies includes the long isoform TRIM46L (83 kDa) and the short isoform TRIM46S (60 kDa).

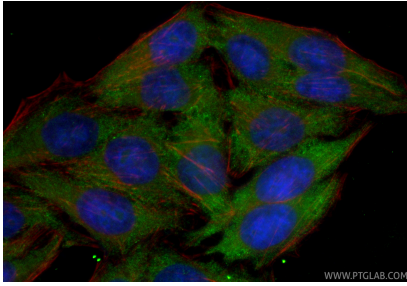
Storage

Storage:
Store at -20°C. Avoid exposure to light. Stable for one year after shipment.
Storage Buffer:
PBS with 50% glycerol, 0.05% Proclin300, 0.5% BSA, pH7.3
Aliquoting is unnecessary for -20°C storage

For technical support and original validation data for this product please contact:
T: 1 (888) 4PTGLAB (1-888-478-4522) (toll free in USA), or 1(312) 455-8498 (outside USA)
E: proteintech@ptglab.com
W: ptglab.com

This product is exclusively available under Proteintech Group brand and is not available to purchase from any other manufacturer.

Selected Validation Data



Immunofluorescent analysis of (-20°C Ethanol) fixed HepG2 cells using CoraLite® Plus 488 TRIM46 antibody (CL488-83614-2, Clone: 240557E1) at dilution of 1:200, CL594-Phalloidin (red).