

For Research Use Only

# CoraLite® Plus 488-conjugated Synaptotagmin-1 Recombinant antibody

Catalog Number:CL488-83637-4



## Basic Information

### Catalog Number:

CL488-83637-4

### Size:

100ul , Concentration: 1000 ug/ml by  
Nanodrop;

### Source:

Rabbit

### Isotype:

IgG

### Immunogen Catalog Number:

AG5970

### GenBank Accession Number:

BC058917

### GeneID (NCBI):

6857

### UNIPROT ID:

P21579

### Full Name:

synaptotagmin I

### Calculated MW:

48 kDa

### Observed MW:

60 kDa

### Purification Method:

Protein A purification

### CloneNo.:

240589F6

### Recommended Dilutions:

IF/ICC 1:50-1:500

### Excitation/Emission maxima wavelengths:

493 nm / 522 nm

## Applications

### Tested Applications:

IF/ICC

### Species Specificity:

human, mouse, rat

### Positive Controls:

IF/ICC : SH-SY5Y cells,

## Background Information

The synaptotagmins are integral membrane proteins of synaptic vesicles thought to serve as Ca(2+) sensors in the process of vesicular trafficking and exocytosis (PMID: 8058779). SYT1 (synaptotagmin I) was firstly identified as a 65-kDa protein with a wide distribution in neuronal and neurosecretory tissue (PMID: 7298720). Calcium binding to SYT1 participates in triggering neurotransmitter release at the synapse (PMID: 11242035). In addition to regulating exocytosis, SYT1 has also been implicated in endocytosis and neurite outgrowth (PMID: 15492212; 11078930; 10336114). This antibody recognizes endogenous SYT1, which has an experimentally determined molecular mass of 65-68 kDa. An additional band of 47 kDa could also be detected, which is corresponding to the calculated molecular weight of SYT1.

## Storage

### Storage:

Store at -20°C. Avoid exposure to light. Stable for one year after shipment.

### Storage Buffer:

PBS with 50% Glycerol, 0.05% Proclin300, 0.5% BSA, pH 7.3.

Aliquoting is unnecessary for -20°C storage

For technical support and original validation data for this product please contact:

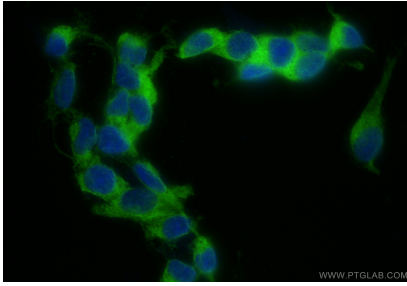
T: 1 (888) 4PTGLAB (1-888-478-4522) (toll free  
in USA), or 1(312) 455-8498 (outside USA)

E: [proteintech@ptglab.com](mailto:proteintech@ptglab.com)  
W: [ptglab.com](http://ptglab.com)

This product is exclusively available under Proteintech Group brand and is not available to purchase from any other manufacturer.

---

## Selected Validation Data



Immunofluorescent analysis of (4% PFA) fixed SH-SY5Y cells using CoraLite® Plus 488 Synaptotagmin-1 antibody (CL488-83637-4, Clone: 240589F6) at dilution of 1:200.