

For Research Use Only

CoraLite® Plus 488-conjugated LPXN Recombinant antibody

Catalog Number: CL488-83657-5



Basic Information

Catalog Number:	GenBank Accession Number:	Purification Method:
CL488-83657-5	BC019035	Protein A purification
Size:	GeneID (NCBI):	CloneNo.:
100ul , Concentration: 1000 ug/ml by Nanodrop;	9404	240483G10
Source:	UNIPROT ID:	Recommended Dilutions:
Rabbit	O60711	IF/ICC 1:200-1:800
Isotype:	Full Name:	Excitation/Emission maxima wavelengths:
IgG	leupaxin	493 nm / 522 nm
Immunogen Catalog Number:	Calculated MW:	
AG34956	43 kDa	
	Observed MW:	
	45 kDa	

Applications

Tested Applications:	Positive Controls:
IF/ICC	IF/ICC : PC-3 cells,
Species Specificity:	
human	

Background Information

LPXN, also known as Leupaxin, LDPL, belongs to the paxillin family. LPXN contributes to the regulation of cell adhesion, spreading, and cell migration and acts as a negative regulator in integrin-mediated cell adhesion events (PMID: 20543562). LPXN has four leucine-rich LD-motifs in the N-terminus and four LIM domains in the C-terminus. It may function in cell type-specific signaling by associating with PYK2, a member of the focal adhesion kinase family (PMID: 9565592). Studies in breast cancer implicate LPXN is involved in the regulation of ER action as a co-factor (PMID: 25955236). LPXN is expressed in prostate cancer cells and its expression intensity is directly linked to PCa progression (PMID: 18451096).

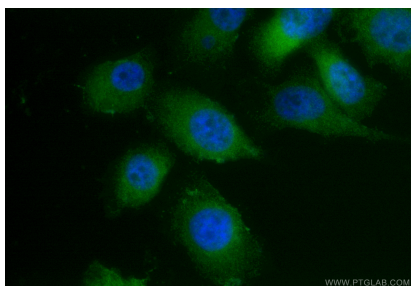
Storage

Storage:
Store at -20°C. Avoid exposure to light. Stable for one year after shipment.
Storage Buffer:
PBS with 50% Glycerol, 0.05% Proclin300, 0.5% BSA, pH 7.3.
Aliquoting is unnecessary for -20°C storage

For technical support and original validation data for this product please contact:
T: 1 (888) 4PTGLAB (1-888-478-4522) (toll free in USA), or 1(312) 455-8498 (outside USA)
E: proteintech@ptglab.com
W: ptglab.com

This product is exclusively available under Proteintech Group brand and is not available to purchase from any other manufacturer.

Selected Validation Data



Immunofluorescent analysis of (4% PFA) fixed PC-3 cells using Coralite® Plus 488 LPXN antibody (CL488-83657-5, Clone: 240483G10) at dilution of 1:400.