

For Research Use Only

CoraLite® Plus 488-conjugated Beta-2-Microglobulin Recombinant monoclonal antibody



Catalog Number: CL488-83683-8

Basic Information

Catalog Number: CL488-83683-8	GenBank Accession Number: BC032589	Purification Method: Protein A purification
Size: 100ul , Concentration: 1000 ug/ml by Nanodrop;	GeneID (NCBI): 567	CloneNo.: 241308F6
Source: Rabbit	ENSEMBL Gene ID: ENSG00000166710	Recommended Dilutions: IF/ICC: 1:50-1:500
Isotype: IgG	UNIPROT ID: P61769	Excitation/Emission maxima wavelengths: 493 nm / 522 nm
Immunogen Catalog Number: EG2284	Full Name: beta-2-microglobulin	
	Calculated MW: 119 aa, 14 kDa	
	Observed MW: 12 kDa	

Applications

Tested Applications: IF/ICC	Positive Controls: IF/ICC : A431 cells,
Species Specificity: human	

Background Information

Beta-2-microglobulin (B2M) is a component of MHC class I molecules, which are present on the surface of nearly all nucleated cells. It can be found in body fluids under physiologic conditions due to shedding from cell surfaces or intracellular release. B2M has various biological functions, including antigen presentation. Investigations reveal that increased synthesis and release of B2M are present in several malignant diseases.

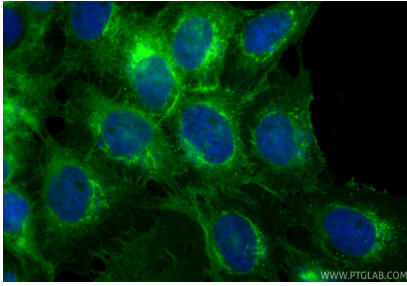
Storage

Storage:
Store at -20°C. Avoid exposure to light. Stable for one year after shipment.
Storage Buffer:
PBS with 50% glycerol, 0.05% Proclin300, 0.5% BSA, pH7.3
Aliquoting is unnecessary for -20°C storage

For technical support and original validation data for this product please contact:
T: 1 (888) 4PTGLAB (1-888-478-4522) (toll free in USA), or 1(312) 455-8498 (outside USA)
E: proteintech@ptglab.com
W: ptglab.com

This product is exclusively available under Proteintech Group brand and is not available to purchase from any other manufacturer.

Selected Validation Data



Immunofluorescent analysis of (4% PFA) fixed A431 cells using Coralite® Plus 488 Beta-2-Microglobulin antibody (CL488-83683-8, Clone: 241308F6) at dilution of 1:200.