

For Research Use Only

CoraLite® Plus 488-conjugated RAB1B Recombinant monoclonal antibody

Catalog Number: CL488-83687-4



Basic Information

Catalog Number: CL488-83687-4	GenBank Accession Number: BC071169	Purification Method: Protein A purification
Size: 100ul , Concentration: 1000 ug/ml by Nanodrop;	GeneID (NCBI): 81876	CloneNo.: 240635D9
Source: Rabbit	UNIPROT ID: Q9H0U4	Recommended Dilutions: IF/ICC: 1:50-1:500
Isotype: IgG	Full Name: RAB1B, member RAS oncogene family	Excitation/Emission maxima wavelengths: 493 nm / 522 nm
Immunogen Catalog Number: AG12197	Calculated MW: 201 aa, 22 kDa	
	Observed MW: 22 kDa	

Applications

Tested Applications: IF/ICC	Positive Controls: IF/ICC : MCF-7 cells,
Species Specificity: human, mouse, rat	

Background Information

Ras-related protein Rab-1B (RAB1B) belongs to the small GTPase superfamily and Rab family. Rab1b, a GTPase regulating secretory transport, was recently associated with targeting proteins to LDs in a Drosophila RNAi screen. Rab1b recruits lipid-synthesizing enzymes, facilitating Lipid droplets (LDs) growth. The small GTPase Rab1b interacts with diacylglycerol acyltransferase 2 to facilitate its targeting to the surface of lipid droplets. (PMID: 38809969). Rab1b, an extensively studied and established master regulator of ER-to-Golgi transport. The mechanism of Rab1b's function is to promote ER to LD surface targeting of those triglyceride-synthesizing enzymes that can associate with the unique lipid monolayer comprising the LD surface (PMID: 38809969). Rab1b is a regulatory protein involved in both COPI and COPII transport (PMID: 17429068).

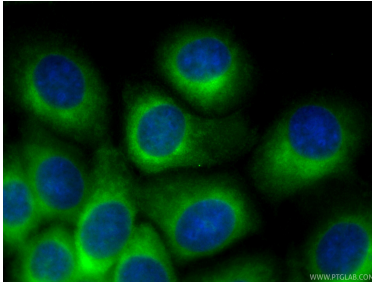
Storage

Storage:
Store at -20°C. Avoid exposure to light. Stable for one year after shipment.
Storage Buffer:
PBS with 50% glycerol, 0.05% Proclin300, 0.5% BSA, pH7.3
Aliquoting is unnecessary for -20°C storage

For technical support and original validation data for this product please contact:
T: 1 (888) 4PTGLAB (1-888-478-4522) (toll free in USA), or 1(312) 455-8498 (outside USA)
E: proteintech@ptglab.com
W: ptglab.com

This product is exclusively available under Proteintech Group brand and is not available to purchase from any other manufacturer.

Selected Validation Data



Immunofluorescent analysis of (-20°C Methanol) fixed MCF-7 cells using CoraLite® Plus 488 RAB1B antibody (CL488-83687-4, Clone: 240635D9) at dilution of 1:200.