

For Research Use Only

CoraLite® Plus 488-conjugated MTMR9 Recombinant antibody

Catalog Number: CL488-83694-4



Basic Information

Catalog Number: CL488-83694-4	GenBank Accession Number: BC022003	Purification Method: Protein A purification
Size: 100ul , Concentration: 1000 ug/ml by Nanodrop;	GeneID (NCBI): 66036	CloneNo.: 240167G7
Source: Rabbit	UNIPROT ID: Q96QG7	Recommended Dilutions: IF/ICC 1:50-1:500
Isotype: IgG	Full Name: myotubularin related protein 9	Excitation/Emission maxima wavelengths: 493 nm / 522 nm
Immunogen Catalog Number: AG34134	Calculated MW: 63 kDa	
	Observed MW: 60 kDa	

Applications

Tested Applications: IF/ICC	Positive Controls: IF/ICC : HeLa cells,
Species Specificity: human	

Background Information

MTMR9 (Myotubularin-related protein 9) acts as an adapter for myotubularin-related phosphatases (PMID: 19038970; 22647598). MTMR9 can increase lipid phosphatase MTMR6 catalytic activity, specifically towards phosphatidylinositol 3,5-bisphosphate and MTMR6 binding affinity for phosphorylated phosphatidylinositols (PMID: 19038970; 22647598). It can also increase MTMR8 catalytic activity towards phosphatidylinositol 3-phosphate and stabilize MTMR8 protein levels (PMID: 22647598).

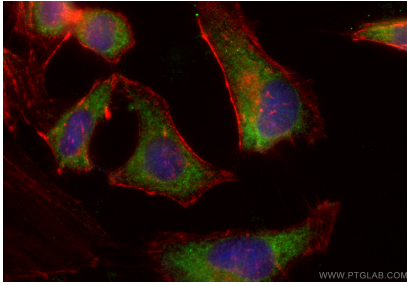
Storage

Storage:
Store at -20°C. Avoid exposure to light. Stable for one year after shipment.
Storage Buffer:
PBS with 50% Glycerol, 0.05% Proclin300, 0.5% BSA, pH 7.3.
Aliquoting is unnecessary for -20°C storage

For technical support and original validation data for this product please contact:
T: 1 (888) 4PTGLAB (1-888-478-4522) (toll free in USA), or 1(312) 455-8498 (outside USA)
E: proteintech@ptglab.com
W: ptglab.com

This product is exclusively available under Proteintech Group brand and is not available to purchase from any other manufacturer.

Selected Validation Data



Immunofluorescent analysis of (-20°C Ethanol) fixed HeLa cells using Coralite® Plus 488 MTMR9 antibody (CL488-83694-4, Clone: 240167G7) at dilution of 1:200, CL594-Phalloidin (red).