

For Research Use Only

CoraLite® Plus 488-conjugated RAP1A Recombinant antibody

Catalog Number: CL488-83708



Basic Information

Catalog Number: CL488-83708	GenBank Accession Number: BC014086	Purification Method: Protein A purification
Size: 100ul , Concentration: 1000 ug/ml by Nanodrop;	GeneID (NCBI): 5906	CloneNo.: 240438G5
Source: Rabbit	UNIPROT ID: P62834	Recommended Dilutions: IF/ICC 1:50-1:500
Isotype: IgG	Full Name: RAP1A, member of RAS oncogene family	Excitation/Emission maxima wavelengths: 493 nm / 522 nm
Immunogen Catalog Number: AG9488	Calculated MW: 184 aa, 21 kDa	

Applications

Tested Applications: IF/ICC	Positive Controls: IF/ICC : HeLa cells,
Species Specificity: human, mouse	

Background Information

RAP1A(Ras-related protein Rap-1A), also known as KREV1. Induces morphological reversion of a cell line transformed by a Ras oncogene. The biological roles of RAP1A include inducing neurite outgrowth and embryonic angiogenesis(PMID: 17916086). As one member of RAS oncogene family, it is a widely expressed receptor, with high mRNA expression in many tissues, particularly abundant in the colon. In cells, RAP1A was localized in cytoplasm and cell membrane(PMID: 11359771, PMID: 11359771).

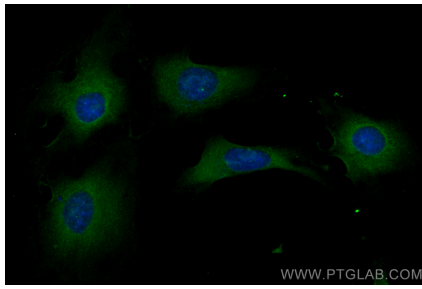
Storage

Storage:
Store at -20°C. Avoid exposure to light. Stable for one year after shipment.
Storage Buffer:
PBS with 50% Glycerol, 0.05% Proclin300, 0.5% BSA, pH 7.3.
Aliquoting is unnecessary for -20°C storage

For technical support and original validation data for this product please contact:
T: 1 (888) 4PTGLAB (1-888-478-4522) (toll free in USA), or 1(312) 455-8498 (outside USA)
E: proteintech@ptglab.com
W: ptglab.com

This product is exclusively available under Proteintech Group brand and is not available to purchase from any other manufacturer.

Selected Validation Data



Immunofluorescent analysis of (-20°C Ethanol) fixed HeLa cells using CoraLite® Plus 488 RAP1A antibody (CL488-83708, Clone: 240438G5) at dilution of 1:200.