

For Research Use Only

CoraLite® Plus 488-conjugated Bif-1 Recombinant antibody

Catalog Number:CL488-83715



Basic Information

Catalog Number: CL488-83715	GenBank Accession Number: BC007455	Purification Method: Protein A purification
Size: 100ul , Concentration: 1000 ug/ml by Nanodrop;	GeneID (NCBI): 51100	CloneNo.: 240623E1
Source: Rabbit	UNIPROT ID: Q9Y371	Recommended Dilutions: IF/ICC 1:50-1:500
Isotype: IgG	Full Name: SH3-domain GRB2-like endophilin B1	Excitation/Emission maxima wavelengths: 493 nm / 522 nm
Immunogen Catalog Number: AG7710	Calculated MW: 41 kDa	
	Observed MW: 41 kDa	

Applications

Tested Applications: IF/ICC	Positive Controls: IF/ICC : HeLa cells,
Species Specificity: human	

Background Information

SH3GLB1 also known as Bif-1, contains an N-terminal domain, a central coiled-coil region, and a C-terminal SH3 domain, but shares no significant homology with members of the Bcl-2 family. SH3GLB1 is involved in activation of caspase-dependent apoptosis by promoting BAX/BAK1 activation (PubMed:16227588).

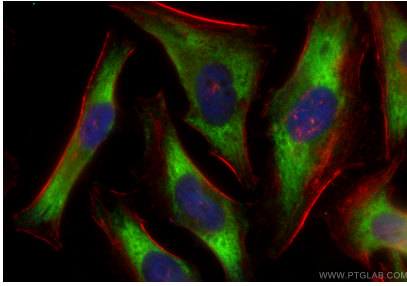
Storage

Storage:
Store at -20°C. Avoid exposure to light. Stable for one year after shipment.
Storage Buffer:
PBS with 50% Glycerol, 0.05% Proclin300, 0.5% BSA, pH 7.3.
Aliquoting is unnecessary for -20°C storage

For technical support and original validation data for this product please contact:
T: 1 (888) 4PTGLAB (1-888-478-4522) (toll free in USA), or 1(312) 455-8498 (outside USA)
E: proteintech@ptglab.com
W: ptglab.com

This product is exclusively available under Proteintech Group brand and is not available to purchase from any other manufacturer.

Selected Validation Data



Immunofluorescent analysis of (-20°C Ethanol) fixed HeLa cells using CoraLite® Plus 488 Bif-1 antibody (CL488-83715, Clone: 240623E1) at dilution of 1:200, CL594-Phalloidin (red).