

For Research Use Only

CoraLite® Plus 488-conjugated HNRNPA2B1 Recombinant antibody

Catalog Number: CL488-83773-7



Basic Information

Catalog Number:

CL488-83773-7

Size:

100ul , Concentration: 1000 ug/ml by
Nanodrop;

Source:

Rabbit

Isotype:

IgG

Immunogen Catalog Number:

AG6563

GenBank Accession Number:

BC000506

GeneID (NCBI):

3181

UNIPROT ID:

P22626

Full Name:

heterogeneous nuclear
ribonucleoprotein A2/B1

Calculated MW:

37 kDa

Observed MW:

36 kDa, 38 kDa

Purification Method:

Protein A purification

CloneNo.:

240831E3

Recommended Dilutions:

IF/ICC 1:50-1:500

Excitation/Emission maxima wavelengths:

493 nm / 522 nm

Applications

Tested Applications:

IF/ICC

Species Specificity:

human, mouse, rat

Positive Controls:

IF/ICC : HeLa cells,

Background Information

HnRNPA2B1 is one of the heterogeneous nuclear ribonucleoproteins (HnRNPs), which regulate the splicing and transportation of mRNA. It has a role in packaging nascent mRNA, alternative splicing, cytoplasmic RNA trafficking, translation, and stabilization. Besides it may involve in telomere maintenance, cell proliferation and differentiation, and glucose transport. Gene HURNPA2B1 encodes two proteins, HNRNPA2 (36kd) and HNRNPB1 (38kd), by alternative splicing.

Storage

Storage:

Store at -20°C. Avoid exposure to light. Stable for one year after shipment.

Storage Buffer:

PBS with 50% Glycerol, 0.05% Proclin300, 0.5% BSA, pH 7.3.

Aliquoting is unnecessary for -20°C storage

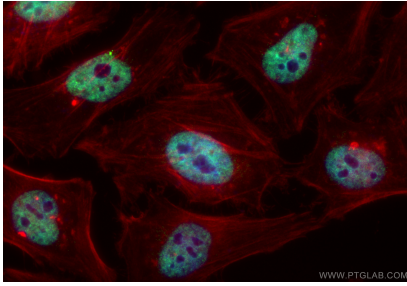
For technical support and original validation data for this product please contact:

T: 1 (888) 4PTGLAB (1-888-478-4522) (toll free
in USA), or 1(312) 455-8498 (outside USA)

E: proteintech@ptglab.com
W: ptglab.com

This product is exclusively available under Proteintech Group brand and is not available to purchase from any other manufacturer.

Selected Validation Data



Immunofluorescent analysis of (4% PFA) fixed HeLa cells using CoraLite® Plus 488 HNRNPA2B1 antibody (CL488-83773-7, Clone: 240831E3) at dilution of 1:200, CL594-Phalloidin (red).