

For Research Use Only

CoraLite® Plus 488-conjugated Islet 1 Recombinant antibody

Catalog Number: CL488-83784-4



Basic Information

Catalog Number: CL488-83784-4	GenBank Accession Number: BC031213	Purification Method: Protein A purification
Size: 100ul , Concentration: 1000 µg/ml by Nanodrop;	GeneID (NCBI): 3670	CloneNo.: 240833D7
Source: Rabbit	UNIPROT ID: P61371	Recommended Dilutions: IF/ICC 1:50-1:500
Isotype: IgG	Full Name: ISL LIM homeobox 1	Excitation/Emission maxima wavelengths: 493 nm / 522 nm
Immunogen Catalog Number: AG33541	Calculated MW: 39 kDa	
	Observed MW: 39-45 kDa	

Applications

Tested Applications: IF/ICC	Positive Controls: IF/ICC : SH-SY5Y cells,
Species Specificity: human	

Background Information

ISL1 belongs to the LIM homeodomain transcription factor family that binds to the enhancer region of the INS gene. It plays a pivotal role in cardiogenesis, and lacking ISL1 expression results in growth arrest or displays profound defects in heart development, including atria, ventricle, and the inflow and outflow tracts. Ubiquitinated probably by WWP1 E3 ubiquitin ligase; ubiquitination is followed by protein degradation.

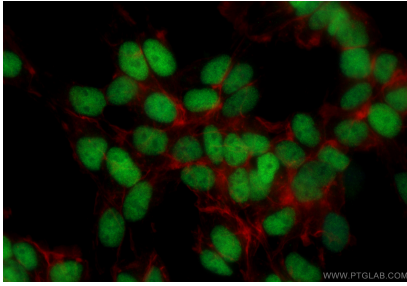
Storage

Storage:
Store at -20°C. Avoid exposure to light. Stable for one year after shipment.
Storage Buffer:
PBS with 50% Glycerol, 0.05% Proclin300, 0.5% BSA, pH 7.3.
Aliquoting is unnecessary for -20°C storage

For technical support and original validation data for this product please contact:
T: 1 (888) 4PTGLAB (1-888-478-4522) (toll free in USA), or 1(312) 455-8498 (outside USA)
E: proteintech@ptglab.com
W: ptglab.com

This product is exclusively available under Proteintech Group brand and is not available to purchase from any other manufacturer.

Selected Validation Data



Immunofluorescent analysis of (4% PFA) fixed SH-SY5Y cells using CoraLite® Plus 488 Islet 1 antibody (CL488-83784-4, Clone: 240833D7) at dilution of 1:200, CL594-Phalloidin (red).