

For Research Use Only

CoraLite® Plus 488-conjugated CEBPB Recombinant antibody

Catalog Number: CL488-83791-6



Basic Information

Catalog Number: CL488-83791-6	GenBank Accession Number: BC007538	Purification Method: Protein A purification
Size: 100ul , Concentration: 1000 ug/ml by Nanodrop;	GeneID (NCBI): 1051	CloneNo.: 240836G6
Source: Rabbit	UNIPROT ID: P17676	Recommended Dilutions: IF/ICC 1:50-1:500
Isotype: IgG	Full Name: CCAAT/enhancer binding protein (C/EBP), beta	Excitation/Emission maxima wavelengths: 493 nm / 522 nm
Immunogen Catalog Number: AG20073	Calculated MW: 345 aa, 36 kDa	
	Observed MW: 42 kDa, 46 kDa	

Applications

Tested Applications: IF/ICC	Positive Controls: IF/ICC : HepG2 cells,
Species Specificity: human	

Background Information

CCAAT/enhancer-binding protein beta (CEBPB), also known as LAP, is a important transcriptional activator in the regulation of genes involved in immune and inflammatory responses. It specifically binds to an IL-1 response element in the IL-6 gene. CEBPb mRNAs possess alternative translation-initiation codons, which result in the formation of truncated forms of the protein. Three variants of CEBPBs have been detected: a 46 kDa full-length liver-enriched transcription-activating protein (LAP1), a 42 kDa LAP2 and a 20 kDa liver-enriched transcription-inhibitory protein (LIP). (PMID:18820298).

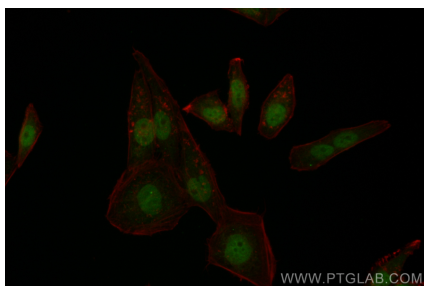
Storage

Storage:
Store at -20°C. Avoid exposure to light. Stable for one year after shipment.
Storage Buffer:
PBS with 50% Glycerol, 0.05% Proclin300, 0.5% BSA, pH 7.3.
Aliquoting is unnecessary for -20°C storage

For technical support and original validation data for this product please contact:
T: 1 (888) 4PTGLAB (1-888-478-4522) (toll free in USA), or 1(312) 455-8498 (outside USA)
E: proteintech@ptglab.com
W: ptglab.com

This product is exclusively available under Proteintech Group brand and is not available to purchase from any other manufacturer.

Selected Validation Data



Immunofluorescent analysis of (4% PFA) fixed HepG2 cells using CoraLite® Plus 488 CEBPB antibody (CL488-83791-6, Clone: 240836G6) at dilution of 1:200.