

For Research Use Only

# CoraLite® Plus 488-conjugated GABARAPL1 Recombinant antibody

Catalog Number: CL488-83817



## Basic Information

<b>Catalog Number:</b> CL488-83817	<b>GenBank Accession Number:</b> BC009309	<b>Purification Method:</b> Protein A purification
<b>Size:</b> 100ul , Concentration: 1000 µg/ml by Nanodrop;	<b>GeneID (NCBI):</b> 23710	<b>CloneNo.:</b> 240533F5
<b>Source:</b> Rabbit	<b>UNIPROT ID:</b> Q9HOR8	<b>Recommended Dilutions:</b> IF/ICC: 1:50-1:500
<b>Isotype:</b> IgG	<b>Full Name:</b> GABA(A) receptor-associated protein like 1	<b>Excitation/Emission maxima wavelengths:</b> 493 nm / 522 nm
<b>Immunogen Catalog Number:</b> AG1473	<b>Calculated MW:</b> 14 kDa	
	<b>Observed MW:</b> 16 kDa	

## Applications

<b>Tested Applications:</b> IF/ICC	<b>Positive Controls:</b> IF/ICC : Chloroquine treated HepG2 cells,
<b>Species Specificity:</b> human, mouse, rat	

## Background Information

GABARAPL1 (GABARAP-like protein 1), also named ATG8, GEC1, APG8L, ATG8L, and APG8-LIKE, is a member of the GABARP (GABAA receptor-associated protein) family. GABARAPL1 was initially identified as an estrogen-regulated gene and the protein acts in receptor and vesicle transport. It's also involved in the process of autophagy like GABARAP and GABARAPL2 and may be considered as an autophagic marker. It is expressed at very high levels in the brain, heart, peripheral blood leukocytes, liver, kidney, placenta, and skeletal muscle and at very low levels in the thymus and small intestine.

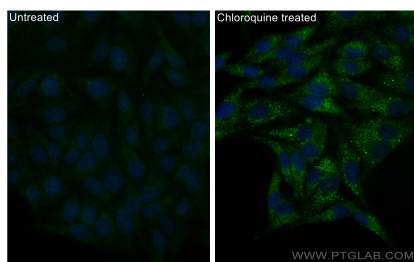
## Storage

**Storage:**  
Store at -20°C. Avoid exposure to light. Stable for one year after shipment.  
**Storage Buffer:**  
PBS with 50% glycerol, 0.05% Proclin300, 0.5% BSA, pH7.3  
Aliquoting is unnecessary for -20°C storage

For technical support and original validation data for this product please contact:  
T: 1 (888) 4PTGLAB (1-888-478-4522) (toll free in USA), or 1(312) 455-8498 (outside USA)  
E: [proteintech@ptglab.com](mailto:proteintech@ptglab.com)  
W: [ptglab.com](http://ptglab.com)

This product is exclusively available under Proteintech Group brand and is not available to purchase from any other manufacturer.

## Selected Validation Data



Immunofluorescent analysis of (-20°C Ethanol) fixed Chloroquine treated HepG2 cells using CoraLite® Plus 488 GABARAPL1 antibody (CL488-83817, Clone: 240533F5 ) at dilution of 1:200.