

For Research Use Only

CoraLite® Plus 488-conjugated TRMT6 Recombinant antibody

Catalog Number: CL488-83843-5



Basic Information

| | | |
|--|---|---|
| Catalog Number: CL488-83843-5 | GenBank Accession Number: BC001262 | Purification Method: Protein A purification |
| Size: 100ul , Concentration: 1000 ug/ml by Nanodrop; | GeneID (NCBI): 51605 | CloneNo.: 240911C5 |
| Source: Rabbit | UNIPROT ID: Q9UJA5 | Recommended Dilutions: IF/ICC 1:50-1:500 |
| Isotype: IgG | Full Name: tRNA methyltransferase 6 homolog (S. cerevisiae) | Excitation/Emission maxima wavelengths: 493 nm / 522 nm |
| Immunogen Catalog Number: AG10176 | Calculated MW: 56 kDa | |
| | Observed MW: 55-60 kDa | |

Applications

| | |
|---------------------------------------|---|
| Tested Applications: IF/ICC | Positive Controls: IF/ICC : HeLa cells, |
| Species Specificity: human | |

Background Information

Transfer RNA (tRNA) modifications help regulate the efficiency of mRNA translation by maintaining the correct reading frames within mRNA. TRMT6 (tRNA methyltransferase 6), also known as GCD10 or TRM6, is a 497 amino acid protein that localizes to the nucleus and exists as a heterodimer with TRM61. Expressed in liver, brain, ovary and testis, TRMT6 functions as a substrate-binding subunit of tRNA and is thought to catalyze the formation of N(1)-methyladenine at position 58 in initiator methionyl-tRNA.

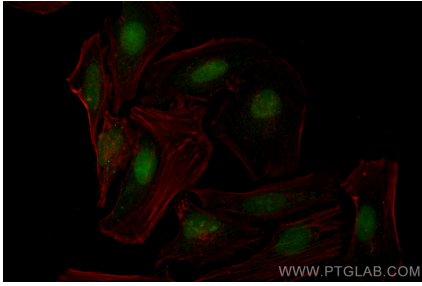
Storage

Storage:
Store at -20°C. Avoid exposure to light. Stable for one year after shipment.
Storage Buffer:
PBS with 50% Glycerol, 0.05% Proclin300, 0.5% BSA, pH 7.3.
Aliquoting is unnecessary for -20°C storage

For technical support and original validation data for this product please contact:
T: 1 (888) 4PTGLAB (1-888-478-4522) (toll free in USA), or 1(312) 455-8498 (outside USA)
E: proteintech@ptglab.com
W: ptglab.com

This product is exclusively available under Proteintech Group brand and is not available to purchase from any other manufacturer.

Selected Validation Data



Immunofluorescent analysis of (4% PFA) fixed HeLa cells using CoraLite® Plus 488 TRMT6 antibody (CL488-83843-5, Clone: 240911C5) at dilution of 1:200.