

For Research Use Only

CoraLite® Plus 488-conjugated HEC1/HEC/NDC80 Recombinant antibody

Catalog Number: **CL488-83859**



Basic Information

Catalog Number: CL488-83859	GenBank Accession Number: /	Purification Method: Protein A purification
Size: 100ul , Concentration: 1000 ug/ml by Nanodrop;	GeneID (NCBI): 10403	CloneNo.: 5A2
Source: Rabbit	Full Name: NDC80 homolog, kinetochore complex component (S. cerevisiae)	Recommended Dilutions: IF/ICC 1:50-1:500
Isotype: IgG	Observed MW: 74 kDa	Excitation/Emission maxima wavelengths: 493 nm / 522 nm

Applications

Tested Applications: IF/ICC	Positive Controls: IF/ICC : HeLa cells,
Species Specificity: human	

Background Information

NDC80 complex is a heterotetrameric protein complex comprised of Hec1 (also called Ndc80), Nuf2, Spc24, and Spc25. Mis12 complex (bound to CENP-C or CENP-T) or CDK1-phosphorylated CENP-T to anchor the NDC80 complex to the kinetochore. HEC is one of several proteins involved in spindle checkpoint signaling. This surveillance mechanism assures correct segregation of chromosomes during cell division by detecting unaligned chromosomes and causing prometaphase arrest until the proper bipolar attachment of chromosomes is achieved.

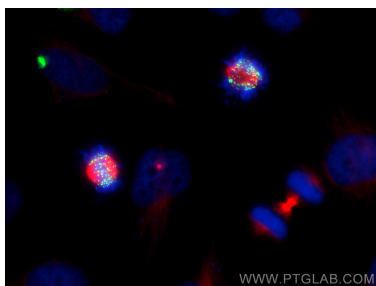
Storage

Storage:
Store at -20°C. Avoid exposure to light. Stable for one year after shipment.
Storage Buffer:
PBS with 50% Glycerol, 0.05% Proclin300, 0.5% BSA, pH 7.3.
Aliquoting is unnecessary for -20°C storage

For technical support and original validation data for this product please contact:
T: 1 (888) 4PTGLAB (1-888-478-4522) (toll free in USA), or 1(312) 455-8498 (outside USA)
E: proteintech@ptglab.com
W: ptglab.com

This product is exclusively available under Proteintech Group brand and is not available to purchase from any other manufacturer.

Selected Validation Data



Immunofluorescent analysis of (4% PFA) fixed HeLa cells using CoraLite® Plus 488 HEC1/HEC/NDC80 antibody (CL488-83859, Clone: 5A2) at dilution of 1:200, CoraLite®594 Alpha Tubulin antibody (CL594-66031, Clone: 1E4C11, red).