

For Research Use Only

CoraLite® Plus 488-conjugated CAMSAP1 Recombinant antibody

Catalog Number: CL488-83864



Basic Information

Catalog Number:

CL488-83864

Size:

100ul , Concentration: 1000 ug/ml by Nanodrop;

Source:

Rabbit

Isotype:

IgG

GenBank Accession Number:

BC144082

GeneID (NCBI):

157922

UNIPROT ID:

Q5T5Y3

Full Name:

calmodulin regulated spectrin-associated protein 1

Calculated MW:

179 kDa

Observed MW:

150-160 kDa

Purification Method:

Protein A purification

CloneNo.:

240633H1

Recommended Dilutions:

IF/ICC 1:50-1:500

Excitation/Emission maxima wavelengths:

493 nm / 522 nm

Applications

Tested Applications:

IF/ICC

Species Specificity:

human, mouse

Positive Controls:

IF/ICC : Neuro-2a cells,

Background Information

There are three members in the CAMSAP family of mammals, namely CAMSAP1-3. Despite having similar structures, these proteins have different distribution patterns within intracellular spaces and tissues. CAMSAP1 (Calmodulin-regulated spectrin-associated protein 1) is mainly expressed in nervous tissue, testis, and liver (PMID: 37903275).

Storage

Storage:

Store at -20°C. Avoid exposure to light. Stable for one year after shipment.

Storage Buffer:

PBS with 50% glycerol, 0.05% Proclin300, 0.5% BSA, pH7.3

Aliquoting is unnecessary for -20°C storage

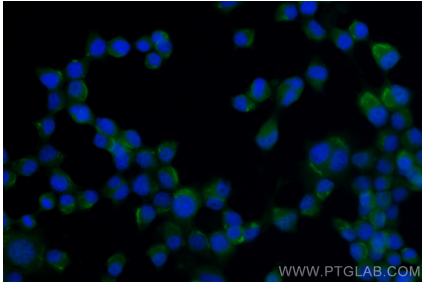
For technical support and original validation data for this product please contact:

T: 1 (888) 4PTGLAB (1-888-478-4522) (toll free in USA), or 1(312) 455-8498 (outside USA)

E: proteintech@ptglab.com
W: ptglab.com

This product is exclusively available under Proteintech Group brand and is not available to purchase from any other manufacturer.

Selected Validation Data



Immunofluorescent analysis of (4% PFA) fixed Neuro-2a cells using CoraLite® Plus 488 CAMSAP1 antibody (CL488-83864, Clone: 240633H1) at dilution of 1:200.