

For Research Use Only

CoraLite® Plus 488-conjugated Loricrin Recombinant antibody

Catalog Number: CL488-83865



Basic Information

Catalog Number:

CL488-83865

GenBank Accession Number:

NM_000427

Purification Method:

Protein A purification

Size:

100ul , Concentration: 1000 ug/ml by
Nanodrop;

GeneID (NCBI):

4014

CloneNo.:

240605C8

Source:

Rabbit

UNIPROT ID:

P23490

Recommended Dilutions:

IF/ICC 1:50-1:500

Isotype:

IgG

Full Name:

loricrin

Excitation/Emission maxima
wavelengths:

493 nm / 522 nm

Calculated MW:

26 kDa

Applications

Tested Applications:

IF/ICC

Positive Controls:

IF/ICC : A431 cells,

Species Specificity:

human

Background Information

Loricrin, also named LOR and LRN, is a major component of the cornified cell envelope (CE) expressed late in epidermal differentiation in the granular layers of normal skin. This antibody is specific to Loricrin.

Storage

Storage:

Store at -20°C. Avoid exposure to light. Stable for one year after shipment.

Storage Buffer:

PBS with 50% Glycerol, 0.05% Proclin300, 0.5% BSA, pH 7.3.

Aliquoting is unnecessary for -20°C storage

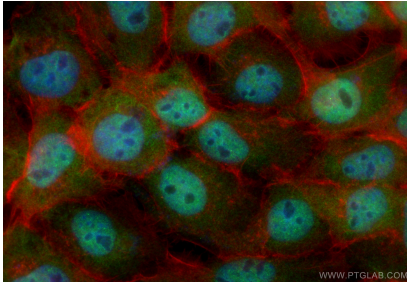
For technical support and original validation data for this product please contact:

T: 1 (888) 4PTGLAB (1-888-478-4522) (toll free
in USA), or 1(312) 455-8498 (outside USA)

E: proteintech@ptglab.com
W: ptglab.com

This product is exclusively available under Proteintech Group brand and is not available to purchase from any other manufacturer.

Selected Validation Data



Immunofluorescent analysis of (4% PFA) fixed A431 cells using CoraLite® Plus 488 Loricrin antibody (CL488-83865, Clone: 240605C8) at dilution of 1:200, CL594-Phalloidin (red).