

For Research Use Only

# CoraLite® Plus 488-conjugated NUCB2/nesfatin-1 Recombinant antibody

Catalog Number: CL488-83917-5



## Basic Information

Catalog Number:	GenBank Accession Number:	Purification Method:
CL488-83917-5	NM_005013	Protein A purification
Size:	GeneID (NCBI):	CloneNo.:
100ul , Concentration: 1000 ug/ml by Nanodrop;	4925	241037C1
Source:	UNIPROT ID:	Recommended Dilutions:
Rabbit	P80303	IF/ICC 1:50-1:500
Isotype:	Full Name:	Excitation/Emission maxima wavelengths:
IgG	nucleobindin 2	493 nm / 522 nm
Immunogen Catalog Number:	Calculated MW:	
AG25152	50 kDa	

## Applications

Tested Applications:	Positive Controls:
IF/ICC, FC (Intra)	IF/ICC : HepG2 cells,
Species Specificity:	
human	

## Background Information

NucB2, an anorexigenic molecule, is expressed mainly in the hypothalamus, particularly in the supraoptic nucleus (SON) and the paraventricular nucleus (PVN). NucB2 is also expressed in the subfornical organ (SFO). Because the SON and PVN are involved in body fluid regulation, NucB2 may be involved in dehydration-induced anorexia. NUCB2 is composed of a signal peptide of 24 amino acids in the N-terminal region and a protein structure containing 396 amino acids. Nesfatin-1 is an 82-amino-acid peptide hormone cleaved from nucleobindin2 (NUCB2).

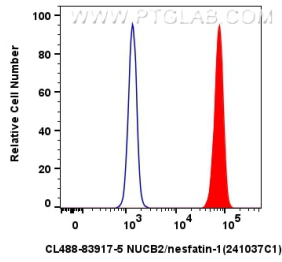
## Storage

**Storage:**  
Store at -20°C. Avoid exposure to light. Stable for one year after shipment.  
**Storage Buffer:**  
PBS with 50% glycerol, 0.05% Proclin300, 0.5% BSA  
Aliquoting is unnecessary for -20°C storage

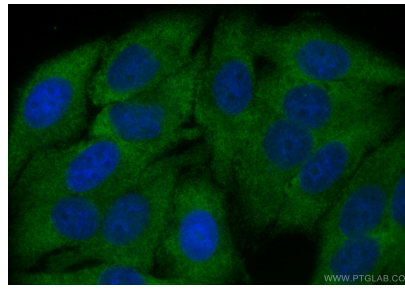
For technical support and original validation data for this product please contact:  
T: 1 (888) 4PTGLAB (1-888-478-4522) (toll free in USA), or 1(312) 455-8498 (outside USA)  
E: [proteintech@ptglab.com](mailto:proteintech@ptglab.com)  
W: [ptglab.com](http://ptglab.com)

This product is exclusively available under Proteintech Group brand and is not available to purchase from any other manufacturer.

## Selected Validation Data



$1 \times 10^6$  HepG2 cells were intracellularly stained with 0.25  $\mu$ g CoraLite® Plus 488-conjugated NUCB2/nesfatin-1 Recombinant antibody (CL488-83917-5, Clone:241037C1)(red), or 0.25  $\mu$ g CoraLite® Plus 488 Rabbit IgG Isotype Control Recombinant Antibody (CL488-98136, Clone: 240953C9) (blue). Cells were fixed with 4% PFA and permeabilized with Flow Cytometry Perm Buffer (PF00011-C).



Immunofluorescent analysis of (-20°C Ethanol) fixed HepG2 cells using CoraLite® Plus 488 NUCB2/nesfatin-1 antibody (CL488-83917-5, Clone: 241037C1 ) at dilution of 1:200.