

For Research Use Only

CoraLite® Plus 488-conjugated BUB1B Recombinant antibody

Catalog Number: CL488-83920-6



Basic Information

Catalog Number: CL488-83920-6	GenBank Accession Number: BC018739	Purification Method: Protein A purification
Size: 100ul , Concentration: 1000 ug/ml by Nanodrop;	GeneID (NCBI): 701	CloneNo.: 240969F7
Source: Rabbit	UNIPROT ID: O60566	Recommended Dilutions: IF/ICC 1:50-1:500
Isotype: IgG	Full Name: budding uninhibited by benzimidazoles 1 homolog beta (yeast)	Excitation/Emission maxima wavelengths: 493 nm / 522 nm
Immunogen Catalog Number: AG34182	Calculated MW: 1050 aa, 120 kDa	
	Observed MW: 130 kDa	

Applications

Tested Applications: IF/ICC	Positive Controls: IF/ICC : HeLa cells,
Species Specificity: human, mouse	

Background Information

BUB1B(Mitotic checkpoint serine/threonine-protein kinase BUB1 beta), also named BUBR1, MAD3 and SSK1, belongs to the BUB1 subfamily. Human BUB1B is a 120 kDa protein that plays a central role in the spindle assembly checkpoint (SAC), the evolutionary conserved and self-regulatory system of higher organisms that monitors and repairs defects in chromosome segregation in mitotic cells(PMID:22201036). In addition to phosphorylation, BUB1B is subjected to posttranslational modifications including acetylation(PMID:22167194). Defects in BUB1B cause premature chromatid separation trait (PCS) and mosaic variegated aneuploidy syndrome type 1 (MVA1).

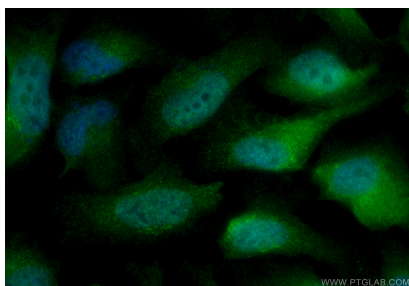
Storage

Storage:
Store at -20°C. Avoid exposure to light. Stable for one year after shipment.
Storage Buffer:
PBS with 50% Glycerol, 0.05% Proclin300, 0.5% BSA, pH 7.3.
Aliquoting is unnecessary for -20°C storage

For technical support and original validation data for this product please contact:
T: 1 (888) 4PTGLAB (1-888-478-4522) (toll free in USA), or 1(312) 455-8498 (outside USA)
E: proteintech@ptglab.com
W: ptglab.com

This product is exclusively available under Proteintech Group brand and is not available to purchase from any other manufacturer.

Selected Validation Data



Immunofluorescent analysis of (4% PFA) fixed HeLa cells using CoraLite® Plus 488 BUB1B antibody (CL488-83920-6, Clone: 240969F7) at dilution of 1:200.