

For Research Use Only

# CoraLite® Plus 488-conjugated transgelin/SM22 Recombinant monoclonal antibody

Catalog Number:CL488-83922-2



## Basic Information

<b>Catalog Number:</b> CL488-83922-2	<b>GenBank Accession Number:</b> BC004927	<b>Purification Method:</b> Protein A purification
<b>Size:</b> 100ul , Concentration: 1000 ug/ml by Nanodrop;	<b>GeneID (NCBI):</b> 6876	<b>CloneNo.:</b> 240864A11
<b>Source:</b> Rabbit	<b>UNIPROT ID:</b> Q01995	<b>Recommended Dilutions:</b> IF-P: 1:50-1:500
<b>Isotype:</b> IgG	<b>Full Name:</b> transgelin	<b>Excitation/Emission maxima wavelengths:</b> 493 nm / 522 nm
<b>Immunogen Catalog Number:</b> AG0764	<b>Calculated MW:</b> 22 kDa	
	<b>Observed MW:</b> 19-22 kDa	

## Applications

<b>Tested Applications:</b> IF-P	<b>Positive Controls:</b> IF-P : mouse heart tissue,
<b>Species Specificity:</b> human, mouse, rat	

## Background Information

The transgelin family is a protein group belonging to the 22kd actin-related calponin superfamily. Of all three isoforms, transgelin 1 is the best characterized. Transgelin 1, or SM22alpha, is a specific marker for differentiated smooth muscle cells. Transgelin 2, also known as SM22 beta, is expressed by both smooth and non-smooth muscle cells in a temporally and spatially regulated pattern. Transgelin 3, also known as NP25, is only found in highly differentiated neuronal cells. This antibody was generated against full-length transgelin 1 protein. It can cross-react with other two transgenes based on the sequence similarity.

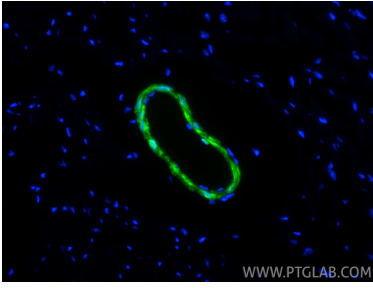
## Storage

**Storage:**  
Store at -20°C. Avoid exposure to light. Stable for one year after shipment.  
**Storage Buffer:**  
PBS with 50% glycerol, 0.05% Proclin300, 0.5% BSA, pH7.3  
Aliquoting is unnecessary for -20°C storage

For technical support and original validation data for this product please contact:  
T: 1 (888) 4PTGLAB (1-888-478-4522) (toll free in USA), or 1(312) 455-8498 (outside USA)  
E: proteintech@ptglab.com  
W: ptglab.com

This product is exclusively available under Proteintech Group brand and is not available to purchase from any other manufacturer.

## Selected Validation Data



Immunofluorescent analysis of (4% PFA) fixed paraffin-embedded mouse heart tissue using CoraLite® Plus 488 transgelin/SM22 antibody (CL488-83922-2, Clone: 240864A11) at dilution of 1:200. Heat mediated antigen retrieval with Tris-EDTA buffer (pH 9.0).