

For Research Use Only

CoraLite® Plus 488-conjugated GDF5 Recombinant antibody

Catalog Number: CL488-83988-4



Basic Information

Catalog Number: CL488-83988-4	GenBank Accession Number: BC032495	Purification Method: Protein A purification
Size: 100ul , Concentration: 1000 ug/ml by Nanodrop;	GeneID (NCBI): 8200	CloneNo.: 240944E5
Source: Rabbit	UNIPROT ID: P43026	Recommended Dilutions: IF/ICC 1:50-1:500
Isotype: IgG	Full Name: growth differentiation factor 5	Excitation/Emission maxima wavelengths: 493 nm / 522 nm
Immunogen Catalog Number: AG6238	Calculated MW: 55 kDa	

Applications

Tested Applications: IF/ICC	Positive Controls: IF/ICC : RAW 264.7 cells,
Species Specificity: human, mouse	

Background Information

Growth and Differentiation Factor 5 (GDF5) plays important roles during joint formation. It is one of the earliest genes expressed in the embryonic joint interzone 7-10, fated to give rise to joint tissues including articular cartilage, synovium, menisci, and ligaments.

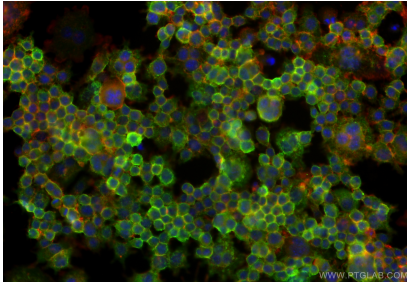
Storage

Storage:
Store at -20°C. Avoid exposure to light. Stable for one year after shipment.
Storage Buffer:
PBS with 50% Glycerol, 0.05% Proclin300, 0.5% BSA, pH 7.3.
Aliquoting is unnecessary for -20°C storage

For technical support and original validation data for this product please contact:
T: 1 (888) 4PTGLAB (1-888-478-4522) (toll free in USA), or 1(312) 455-8498 (outside USA)
E: proteintech@ptglab.com
W: ptglab.com

This product is exclusively available under Proteintech Group brand and is not available to purchase from any other manufacturer.

Selected Validation Data



Immunofluorescent analysis of (4% PFA) fixed RAW 264.7 cells using CoraLite® Plus 488 GDF5 antibody (CL488-83988-4, Clone: 240944E5) at dilution of 1:200, CL594-Phalloidin (red).