

For Research Use Only

CoraLite® Plus 488-conjugated KIF5A Recombinant antibody

Catalog Number: CL488-84013-4



Basic Information

Catalog Number:

CL488-84013-4

Size:

100ul , Concentration: 1000 µg/ml by
Nanodrop;

Source:

Rabbit

Isotype:

IgG

Immunogen Catalog Number:

AG15518

GenBank Accession Number:

BC146670

GeneID (NCBI):

3798

UNIPROT ID:

Q12840

Full Name:

kinesin family member 5A

Calculated MW:

1032 aa, 117 kDa

Observed MW:

118-120 kDa

Purification Method:

Protein A purification

CloneNo.:

241124H1

Recommended Dilutions:

IF/ICC 1:50-1:500

Excitation/Emission maxima wavelengths:

493 nm / 522 nm

Applications

Tested Applications:

IF/ICC

Species Specificity:

human, mouse, rat

Positive Controls:

IF/ICC : PC-12 cells,

Background Information

Kinesin superfamily proteins (KIFs) are microtubule-based molecular motors essential for the intracellular transport of various cargos, including organelles, proteins, and RNAs. KIF5A is expressed exclusively in neurons and transports neuronal cargoes into axons and dendrites. KIF5A mutations have been associated with Charcot-Marie-Tooth Type 2, an axonal peripheral neuropathy characterized by progressive loss of peripheral sensation and muscle wasting.

Storage

Storage:

Store at -20°C. Avoid exposure to light. Stable for one year after shipment.

Storage Buffer:

PBS with 50% Glycerol, 0.05% Proclin300, 0.5% BSA, pH 7.3.

Aliquoting is unnecessary for -20°C storage

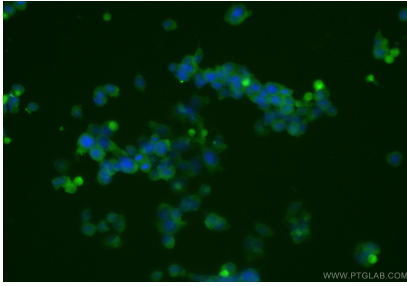
For technical support and original validation data for this product please contact:

T: 1 (888) 4PTGLAB (1-888-478-4522) (toll free
in USA), or 1(312) 455-8498 (outside USA)

E: proteintech@ptglab.com
W: ptglab.com

This product is exclusively available under Proteintech Group brand and is not available to purchase from any other manufacturer.

Selected Validation Data



Immunofluorescent analysis of (-20°C Ethanol) fixed PC-12 cells using CoraLite® Plus 488 KIF5A antibody (CL488-84013-4, Clone: 241124H1) at dilution of 1:200.