

For Research Use Only

# CoraLite® Plus 488-conjugated PRC1 Recombinant antibody

Catalog Number: CL488-84041-2



## Basic Information

<b>Catalog Number:</b> CL488-84041-2	<b>GenBank Accession Number:</b> BC003138	<b>Purification Method:</b> Protein A purification
<b>Size:</b> 100ul , Concentration: 1000 ug/ml by Nanodrop;	<b>GeneID (NCBI):</b> 9055	<b>CloneNo.:</b> 241216H2
<b>Source:</b> Rabbit	<b>UNIPROT ID:</b> O43663	<b>Recommended Dilutions:</b> IF/ICC 1:50-1:500
<b>Isotype:</b> IgG	<b>Full Name:</b> protein regulator of cytokinesis 1	<b>Excitation/Emission maxima wavelengths:</b> 493 nm / 522 nm
<b>Immunogen Catalog Number:</b> AG8028	<b>Calculated MW:</b> 72 kDa	

## Applications

<b>Tested Applications:</b> IF/ICC	<b>Positive Controls:</b> IF/ICC : HepG2 cells,
<b>Species Specificity:</b> human	

## Background Information

PRC1 (protein regulator of cytokinesis 1) is a microtubule-bundling protein that is involved in cytokinesis. Depletion of PRC1 leads to failed cytokinesis. PRC1 is located in the nucleus during interphase, and becomes associated with mitotic spindles in a highly dynamic manner during mitosis, and localizes to the cell mid-body during cytokinesis. PRC1 is a substrate of CDK1 and it was assumed that CDK1 phosphorylation blocks its activity during metaphase. Three isoforms of PRC1 exist due to the alternative splicing, with predictive molecular weight of 71.6 kDa, 70.2 kDa and 66.2 kDa, respectively.

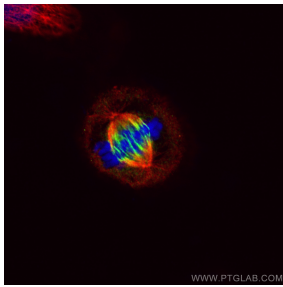
## Storage

**Storage:**  
Store at -20°C. Avoid exposure to light. Stable for one year after shipment.  
**Storage Buffer:**  
PBS with 50% Glycerol, 0.05% Proclin300, 0.5% BSA, pH 7.3.  
**Aliquoting is unnecessary for -20°C storage**

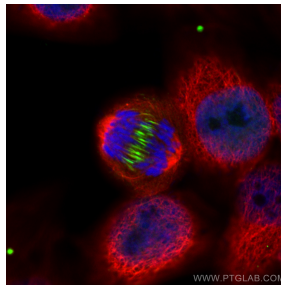
For technical support and original validation data for this product please contact:  
T: 1 (888) 4PTGLAB (1-888-478-4522) (toll free in USA), or 1(312) 455-8498 (outside USA)  
E: [proteintech@ptglab.com](mailto:proteintech@ptglab.com)  
W: [ptglab.com](http://ptglab.com)

This product is exclusively available under Proteintech Group brand and is not available to purchase from any other manufacturer.

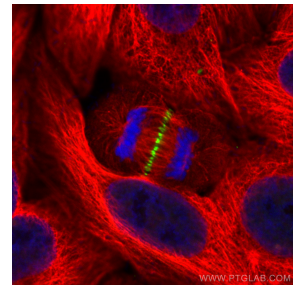
## Selected Validation Data



Immunofluorescent analysis of (4% PFA) fixed HepG2 cells using CoraLite® Plus 488 PRC1 antibody (CL488-84041-2, Clone: 241216H2 ) at dilution of 1:200, Alpha Tubulin antibody (66031-1-Ig, Clone: 1E4C11, red).



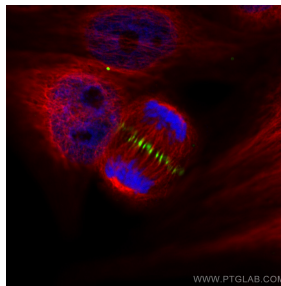
Immunofluorescent analysis of (4% PFA) fixed HepG2 cells using CoraLite® Plus 488 PRC1 antibody (CL488-84041-2, Clone: 241216H2 ) at dilution of 1:200, Alpha Tubulin antibody (66031-1-Ig, Clone: 1E4C11, red).



Immunofluorescent analysis of (4% PFA) fixed HepG2 cells using CoraLite® Plus 488 PRC1 antibody (CL488-84041-2, Clone: 241216H2 ) at dilution of 1:200, Alpha Tubulin antibody (66031-1-Ig, Clone: 1E4C11, red).



Immunofluorescent analysis of (4% PFA) fixed HepG2 cells using CoraLite® Plus 488 PRC1 antibody (CL488-84041-2, Clone: 241216H2 ) at dilution of 1:200, Alpha Tubulin antibody (66031-1-Ig, Clone: 1E4C11, red).



Immunofluorescent analysis of (4% PFA) fixed HepG2 cells using CoraLite® Plus 488 PRC1 antibody (CL488-84041-2, Clone: 241216H2 ) at dilution of 1:200, Alpha Tubulin antibody (66031-1-Ig, Clone: 1E4C11, red).