

For Research Use Only

CoraLite® Plus 488-conjugated KLK3/PSA Recombinant antibody

Catalog Number:CL488-84059-5



Basic Information

Catalog Number: CL488-84059-5	GenBank Accession Number: NM_001648.2	Purification Method: Protein A purification
Size: 100ul , Concentration: 1000 ug/ml by Nanodrop;	GeneID (NCBI): 354	CloneNo.: 241263F8
Source: Rabbit	UNIPROT ID: P07288-1	Recommended Dilutions: IF/ICC 1:50-1:500
Isotype: IgG	Full Name: kallikrein-related peptidase 3	Excitation/Emission maxima wavelengths: 493 nm / 522 nm
	Calculated MW: 29 kDa	
	Observed MW: 30-34 kDa	

Applications

Tested Applications: IF/ICC, FC (Intra)	Positive Controls: IF/ICC : LNCaP cells,
Species Specificity: human	

Background Information

Kallikreins are a subgroup of serine proteases having diverse physiological functions. Growing evidence suggests that many kallikreins are implicated in carcinogenesis and some have potential as novel cancer and other disease biomarkers. kallikrein-related peptidase 3, which is also called PSA (prostate-specific antigen) in the clinical setting, is useful in the diagnosis and monitoring of prostatic carcinoma. KLK3 has 5 isoforms produced by alternative splicing.

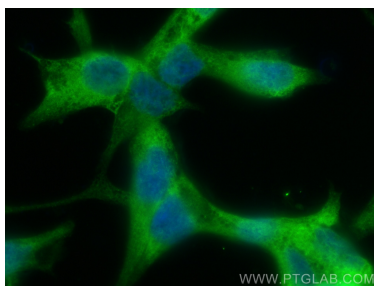
Storage

Storage:
Store at -20°C. Avoid exposure to light. Stable for one year after shipment.
Storage Buffer:
PBS with 50% Glycerol, 0.05% Proclin300, 0.5% BSA, pH 7.3.
Aliquoting is unnecessary for -20°C storage

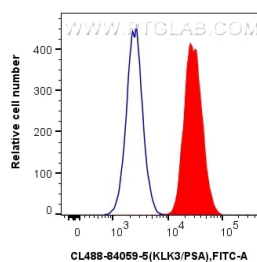
For technical support and original validation data for this product please contact:
T: 1 (888) 4PTGLAB (1-888-478-4522) (toll free in USA), or 1(312) 455-8498 (outside USA)
E: proteintech@ptglab.com
W: ptglab.com

This product is exclusively available under Proteintech Group brand and is not available to purchase from any other manufacturer.

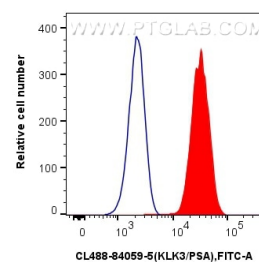
Selected Validation Data



Immunofluorescent analysis of (4% PFA) fixed LNCaP cells using CoraLite® Plus 488 KLK3/PSA antibody (CL488-84059-5, Clone: 241263F8) at dilution of 1:200.



1x10⁶ PC-3 cells were intracellularly stained with 0.25 ug CoraLite® Plus 488-conjugated KLK3/PSA Recombinant antibody (CL488-84059-5, Clone:241263F8)(red), or 0.25 ug CoraLite® Plus 488 Rabbit IgG Isotype Control Recombinant Antibody (CL488-98136, Clone: 240953C9) (blue). Cells were fixed and permeabilized with Transcription Factor Staining Buffer Kit (PF00011).



1x10⁶ HeLa cells were intracellularly stained with 0.25 ug CoraLite® Plus 488-conjugated KLK3/PSA Recombinant antibody (CL488-84059-5, Clone:241263F8)(red), or 0.25 ug CoraLite® Plus 488 Rabbit IgG Isotype Control Recombinant Antibody (CL488-98136, Clone: 240953C9) (blue). Cells were fixed and permeabilized with Transcription Factor Staining Buffer Kit (PF00011).