

For Research Use Only

# CoraLite® Plus 488-conjugated CD38 Recombinant antibody

Catalog Number: CL488-84070-2



## Basic Information

<b>Catalog Number:</b> CL488-84070-2	<b>GenBank Accession Number:</b> BC007964	<b>Purification Method:</b> Protein A purification
<b>Size:</b> 100ul , Concentration: 1000 ug/ml by Nanodrop;	<b>GeneID (NCBI):</b> 952	<b>CloneNo.:</b> 241246B1
<b>Source:</b> Rabbit	<b>ENSEMBL Gene ID:</b> ENSG00000004468	<b>Recommended Dilutions:</b> IF/ICC 1:50-1:500
<b>Isotype:</b> IgG	<b>UNIPROT ID:</b> P28907	<b>Excitation/Emission maxima wavelengths:</b> 493 nm / 522 nm
	<b>Full Name:</b> CD38 molecule	
	<b>Calculated MW:</b> 300 aa, 34 kDa	
	<b>Observed MW:</b> 42 kDa	

## Applications

<b>Tested Applications:</b> IF/ICC	<b>Positive Controls:</b> IF/ICC : Raji cells,
<b>Species Specificity:</b> human	

## Background Information

CD38, also known as ADP-ribosyl cyclase 1, is a type II transmembrane glycoprotein with a short N-terminal cytoplasmic tail, a single membrane-spanning domain, and a C-terminal extracellular region with four N-glycosylation sites (PMID: 2319135). The extracellular domain of CD38 has bifunctional enzyme activities that catalyze synthesis of cyclic ADP ribose from nicotinamide adenine dinucleotide (NAD) and hydrolysis of cyclic ADP ribose to adenosine diphosphoribose (PMID: 10636863). CD38 is expressed on a variety of hematopoietic and non-hematopoietic cells and is involved in diverse processes such as generation of calcium-mobilizing metabolites, cell activation, and chemotaxis (PMID: 25938500).

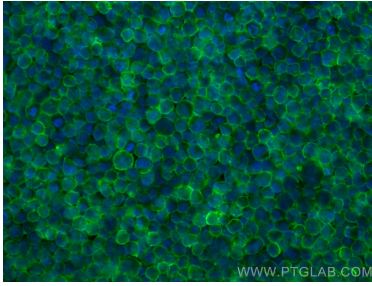
## Storage

**Storage:**  
Store at -20°C. Avoid exposure to light. Stable for one year after shipment.  
**Storage Buffer:**  
PBS with 50% Glycerol, 0.05% Proclin300, 0.5% BSA, pH 7.3.  
**Aliquoting is unnecessary for -20°C storage**

For technical support and original validation data for this product please contact:  
T: 1 (888) 4PTGLAB (1-888-478-4522) (toll free in USA), or 1(312) 455-8498 (outside USA)  
E: [proteintech@ptglab.com](mailto:proteintech@ptglab.com)  
W: [ptglab.com](http://ptglab.com)

This product is exclusively available under Proteintech Group brand and is not available to purchase from any other manufacturer.

## Selected Validation Data



Immunofluorescent analysis of (4% PFA) fixed Raji cells using CoraLite® Plus 488 CD38 antibody (CL488-84070-2, Clone: 241246B1 ) at dilution of 1:200.