

For Research Use Only

CoraLite® Plus 488-conjugated DDX24 Recombinant antibody

Catalog Number: CL488-84103-6



Basic Information

Catalog Number: CL488-84103-6	GenBank Accession Number: BC008847	Purification Method: Protein A purification
Size: 100ul , Concentration: 1000 ug/ml by Nanodrop;	GeneID (NCBI): 57062	CloneNo.: 241145G10
Source: Rabbit	UNIPROT ID: Q9GZR7	Recommended Dilutions: IF/ICC 1:50-1:500
Isotype: IgG	Full Name: DEAD (Asp-Glu-Ala-Asp) box polypeptide 24	Excitation/Emission maxima wavelengths: 493 nm / 522 nm
Immunogen Catalog Number: AG8407	Calculated MW: 96 kDa	

Applications

Tested Applications: IF/ICC	Positive Controls: IF/ICC : HeLa cells,
Species Specificity: human	

Background Information

DDX24 is a family member of Asp-Glu-Ala-Asp (DEAD) box containing RNA helicases, and DEAD-box RNA helicases are characterized by a conserved DEAD motif. DDX24 was associated with cancer development, viral infection, and vascular malformation.

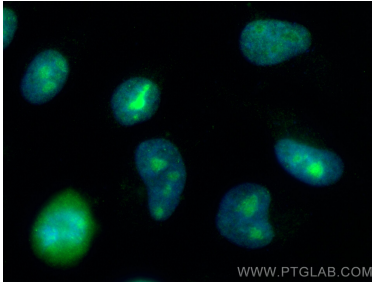
Storage

Storage:
Store at -20°C. Avoid exposure to light. Stable for one year after shipment.
Storage Buffer:
PBS with 50% Glycerol, 0.05% Proclin300, 0.5% BSA, pH 7.3.
Aliquoting is unnecessary for -20°C storage

For technical support and original validation data for this product please contact:
T: 1 (888) 4PTGLAB (1-888-478-4522) (toll free in USA), or 1(312) 455-8498 (outside USA)
E: proteintech@ptglab.com
W: ptglab.com

This product is exclusively available under Proteintech Group brand and is not available to purchase from any other manufacturer.

Selected Validation Data



Immunofluorescent analysis of (4% PFA) fixed HeLa cells using CoraLite® Plus 488 DDX24 antibody (CL488-84103-6, Clone: 241145G10) at dilution of 1:200.