

For Research Use Only

CoraLite® Plus 488-conjugated GLI2-Specific Recombinant antibody

Catalog Number: CL488-84141



Basic Information

Catalog Number: CL488-84141	GenBank Accession Number: NM_005270	Purification Method: Protein A purification
Size: 100ul , Concentration: 1000 ug/ml by Nanodrop;	GeneID (NCBI): 14633	CloneNo.: 241049C10
Source: Rabbit	UNIPROT ID: Q0VGT2	Recommended Dilutions: IF/ICC 1:50-1:500
Isotype: IgG	Full Name: GLI family zinc finger 2	Excitation/Emission maxima wavelengths: 493 nm / 522 nm
	Calculated MW: 168 kDa	
	Observed MW: 80-90 kDa, 130-140 kDa, 160-180 kDa	

Applications

Tested Applications: IF/ICC	Positive Controls: IF/ICC : HepG2 cells,
Species Specificity: human, mouse	

Background Information

GLI2, also named as THP, belongs to the GLI C2H2-type zinc-finger protein family. GLI2 play a role during embryogenesis. It binds to the DNA sequence 5'-GAACCACCCA-3' which is part of the TRE-2S regulatory element that augments the Tax-dependent enhancer of human T-cell leukemia virus type 1. It is implicated in the transduction of SHH signal. Mutation of GLI2 will cause of holoprosencephaly type 9 (HPE9). Four possible isoforms (hGli2a, b, g, and d) are formed by combinations of two independent alternative splicings, and all the isoforms could bind to a DNA motif, TRE2S. hGli2 a, b, g, and d. These isoforms encode 133-, 131-, 88-, and 86-kDa proteins, respectively.

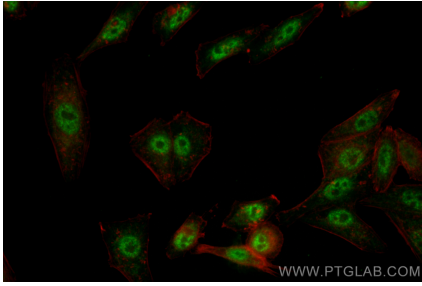
Storage

Storage:
Store at -20°C. Avoid exposure to light. Stable for one year after shipment.
Storage Buffer:
PBS with 50% Glycerol, 0.05% Proclin300, 0.5% BSA, pH 7.3.
Aliquoting is unnecessary for -20°C storage

For technical support and original validation data for this product please contact:
T: 1 (888) 4PTGLAB (1-888-478-4522) (toll free in USA), or 1(312) 455-8498 (outside USA)
E: proteintech@ptglab.com
W: ptglab.com

This product is exclusively available under Proteintech Group brand and is not available to purchase from any other manufacturer.

Selected Validation Data



Immunofluorescent analysis of (4% PFA) fixed HepG2 cells using CoraLite® Plus 488 GLI2-Specific antibody (CL488-84141, Clone: 241049C10) at dilution of 1:200.