

For Research Use Only

CoraLite® Plus 488-conjugated FAM136A Recombinant antibody

Catalog Number: CL488-84150-2



Basic Information

Catalog Number: CL488-84150-2	GenBank Accession Number: BC014975	Purification Method: Protein A purification
Size: 100ul , Concentration: 1000 ug/ml by Nanodrop;	GeneID (NCBI): 84908	CloneNo.: 241433D12
Source: Rabbit	UNIPROT ID: Q96C01	Recommended Dilutions: IF/ICC 1:50-1:500
Isotype: IgG	Full Name: family with sequence similarity 136, member A	Excitation/Emission maxima wavelengths: 493 nm / 522 nm
Immunogen Catalog Number: AG34058	Observed MW: 12 kDa	

Applications

Tested Applications: IF/ICC	Positive Controls: IF/ICC : HeLa cells,
Species Specificity: human, mouse, rat	

Background Information

FAM136A is an evolutionarily conserved nuclear gene encoding a mitochondrial protein whose specific function is unknown, but which is commonly found in neurosensory epithelial cells, where it plays a role in the electron transport chain of respiration (PMID: 37461313). FAM136A, with a molecular mass of 16-kDa, is normally expressed in the cytoplasm and has been linked to familial Meniere's disease.

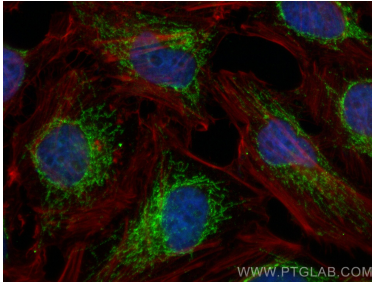
Storage

Storage:
Store at -20°C. Avoid exposure to light. Stable for one year after shipment.
Storage Buffer:
PBS with 50% Glycerol, 0.05% Proclin300, 0.5% BSA, pH 7.3.
Aliquoting is unnecessary for -20°C storage

For technical support and original validation data for this product please contact:
T: 1 (888) 4PTGLAB (1-888-478-4522) (toll free in USA), or 1(312) 455-8498 (outside USA)
E: proteintech@ptglab.com
W: ptglab.com

This product is exclusively available under Proteintech Group brand and is not available to purchase from any other manufacturer.

Selected Validation Data



Immunofluorescent analysis of (4% PFA) fixed HeLa cells using CoraLite® Plus 488 FAM136A antibody (CL488-84150-2, Clone: 241433D12) at dilution of 1:200, CL594-Phalloidin (red).