

For Research Use Only

CoraLite® Plus 488-conjugated Neprilysin/CD10 Recombinant antibody

Catalog Number:CL488-84181



Basic Information

Catalog Number: CL488-84181	GenBank Accession Number: BC101658	Purification Method: Protein A purification
Size: 100ul , Concentration: 1000 ug/ml by Nanodrop;	GeneID (NCBI): 4311	CloneNo.: 241322A8
Source: Rabbit	UNIPROT ID: P08473	Recommended Dilutions: IF-P: 1:50-1:500
Isotype: IgG	Full Name: membrane metallo-endoropeptidase	Excitation/Emission maxima wavelengths: 493 nm / 522 nm
	Calculated MW: 750 aa, 86 kDa	
	Observed MW: 100 kDa	

Applications

Tested Applications: IF-P	Positive Controls: IF-P : mouse kidney tissue,
Species Specificity: human, mouse, rat	

Background Information

CD10, also known as neprilysin, membrane metallo-endoropeptidase (MME), neutral endopeptidase (NEP), or common acute lymphoblastic leukemia antigen (CALLA), is a 100-kDa type II transmembrane glycoprotein belonging to peptidase M13 family (PMID: 7760013; 8102558). Among hematopoietic cells, CD10 is expressed on granulocytes, B cell precursors, mature germinal center B cells, a subset of immature thymocytes (PMID: 13679451). CD10 is also expressed on a variety of nonhematopoietic cell types, including bronchial epithelial cells, cultured fibroblasts, bone marrow stromal cells, renal proximal tubular epithelial cells, breast myoepithelium, biliary canaliculi (PMID: 8102558). CD10 is a cell surface peptidase that cleaves peptide bonds on the amino side of hydrophobic amino acids and inactivates a variety of physiologically active peptides. Loss or decreases in CD10 expression have been reported in a variety of malignancies (PMID: 16054017).

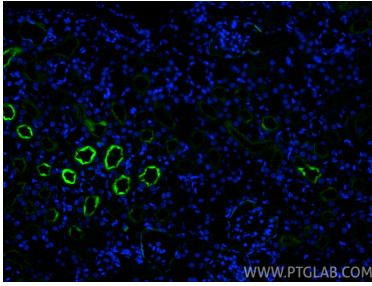
Storage

Storage:
Store at -20°C. Avoid exposure to light. Stable for one year after shipment.
Storage Buffer:
PBS with 50% glycerol, 0.05% Proclin300, 0.5% BSA, pH7.3
Aliquoting is unnecessary for -20°C storage

For technical support and original validation data for this product please contact:
T: 1 (888) 4PTGLAB (1-888-478-4522) (toll free in USA), or 1(312) 455-8498 (outside USA)
E: proteintech@ptglab.com
W: ptglab.com

This product is exclusively available under Proteintech Group brand and is not available to purchase from any other manufacturer.

Selected Validation Data



Immunofluorescent analysis of (4% PFA) fixed paraffin-embedded mouse kidney tissue using CoraLite® Plus 488 Nephrin/CD10 antibody (CL488-84181, Clone: 241322A8) at dilution of 1:200. Heat mediated antigen retrieval with Tris-EDTA buffer (pH 9.0).