

For Research Use Only

CoraLite® Plus 488-conjugated Ki-67 Recombinant antibody

Catalog Number: CL488-84192-4



Basic Information

Catalog Number: CL488-84192-4	GenBank Accession Number: NM_002417	Purification Method: Protein A purification
Size: 100ul , Concentration: 1000 ug/ml by Nanodrop;	GeneID (NCBI): 4288	CloneNo.: 241499E7
Source: Rabbit	UNIPROT ID: P46013	Recommended Dilutions: IF/ICC 1:50-1:500
Isotype: IgG	Full Name: antigen identified by monoclonal antibody Ki-67	Excitation/Emission maxima wavelengths: 493 nm / 522 nm
	Calculated MW: 359 kDa	

Applications

Tested Applications: IF/ICC	Positive Controls: IF/ICC : HeLa cells,
Species Specificity: human	

Background Information

The Ki-67 protein (also known as MKI67) is a cellular marker for proliferation. Ki67 is present during all active phases of the cell cycle (G1, S, G2 and M), but is absent in resting cells (G0). Cellular content of Ki-67 protein markedly increases during cell progression through S phase of the cell cycle. Therefore, the nuclear expression of Ki67 can be evaluated to assess tumor proliferation by immunohistochemistry. It has been demonstrated to be of prognostic value in breast cancer. In head and neck cancer, several studies have reported an association between high proliferative activity and poorer prognosis.

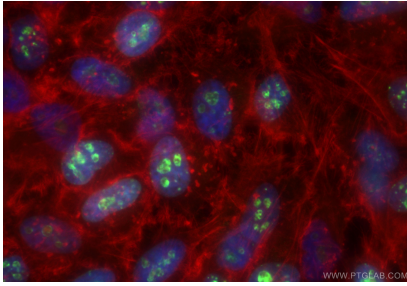
Storage

Storage:
Store at -20°C. Avoid exposure to light. Stable for one year after shipment.
Storage Buffer:
PBS with 50% glycerol, 0.05% Proclin300, 0.5% BSA, pH7.3
Aliquoting is unnecessary for -20°C storage

For technical support and original validation data for this product please contact:
T: 1 (888) 4PTGLAB (1-888-478-4522) (toll free in USA), or 1(312) 455-8498 (outside USA)
E: proteintech@ptglab.com
W: ptglab.com

This product is exclusively available under Proteintech Group brand and is not available to purchase from any other manufacturer.

Selected Validation Data



Immunofluorescent analysis of (4% PFA) fixed HeLa cells using CoraLite® Plus 488 Ki-67 antibody (CL488-84192-4, Clone: 241499E7) at dilution of 1:200, CL594-phalloidin (red).