

For Research Use Only

CoraLite® Plus 488-conjugated ATP2A1 Recombinant monoclonal antibody

Catalog Number: CL488-84213-5



Basic Information

Catalog Number:

CL488-84213-5

Size:

100ul , Concentration: 1000 ug/ml by 487
Nanodrop;

Source:

Rabbit

Isotype:

IgG

Immunogen Catalog Number:

AG17944

GenBank Accession Number:

BC037354

GeneID (NCBI):

487

UNIPROT ID:

O14983

Full Name:

ATPase, Ca++ transporting, cardiac
muscle, fast twitch 1

Calculated MW:

1001 aa, 110 kDa

Observed MW:

110 kDa

Purification Method:

Protein A purification

CloneNo.:

241500D12

Recommended Dilutions:

IF-P: 1:50-1:500

Excitation/Emission maxima wavelengths:

493 nm / 522 nm

Applications

Tested Applications:

IF-P

Species Specificity:

human, mouse, rat

Positive Controls:

IF-P: mouse skeletal muscle tissue,

Background Information

ATP2A1 also known as SERCA1, encodes one of the SERCA Ca(2+)-ATPases, which are intracellular pumps located in the sarcoplasmic or endoplasmic reticula of muscle cells. This enzyme catalyzes the hydrolysis of ATP coupled with the translocation of calcium from the cytosol to the sarcoplasmic reticulum lumen and is involved in muscular excitation and contraction. Mutations in ATP2A1 cause some autosomal recessive forms of Brody disease(PMID: 23911890, 10914677).

Storage

Storage:

Store at -20°C. Avoid exposure to light. Stable for one year after shipment.

Storage Buffer:

PBS with 50% glycerol, 0.05% Proclin300, 0.5% BSA, pH7.3

Aliquoting is unnecessary for -20°C storage

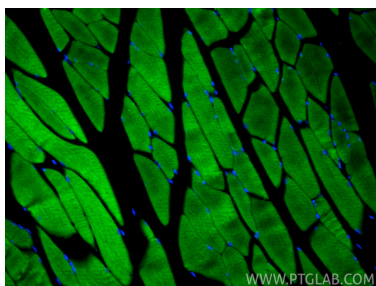
For technical support and original validation data for this product please contact:

T: 1 (888) 4PTGLAB (1-888-478-4522) (toll free
in USA), or 1(312) 455-8498 (outside USA)

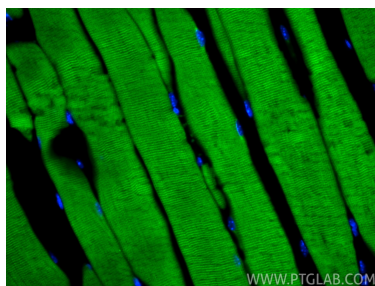
E: proteintech@ptglab.com
W: ptglab.com

This product is exclusively available under Proteintech Group brand and is not available to purchase from any other manufacturer.

Selected Validation Data



Immunofluorescent analysis of (4% PFA) fixed paraffin-embedded mouse skeletal muscle tissue using CoraLite® Plus 488 ATP2A1 antibody (CL488-84213-5, Clone: 241500D12) at dilution of 1:200. Heat mediated antigen retrieval with Tris-EDTA buffer (pH 9.0).



Immunofluorescent analysis of (4% PFA) fixed paraffin-embedded mouse skeletal muscle tissue using CoraLite® Plus 488 ATP2A1 antibody (CL488-84213-5, Clone: 241500D12) at dilution of 1:200. Heat mediated antigen retrieval with Tris-EDTA buffer (pH 9.0).