

For Research Use Only

CoraLite® Plus 488-conjugated CPN1 Recombinant monoclonal antibody

Catalog Number: CL488-84218



Basic Information

Catalog Number:	GenBank Accession Number:	Purification Method:
CL488-84218	BC027897	Protein A purification
Size:	GeneID (NCBI):	CloneNo.:
100ul , Concentration: 1000 ug/ml by Nanodrop;	1369	241481A5
Source:	UNIPROT ID:	Recommended Dilutions:
Rabbit	P15169	IF/ICC: 1:300-1:1200
Isotype:	Full Name:	Excitation/Emission maxima
IgG	carboxypeptidase N, polypeptide 1	wavelengths:
Immunogen Catalog Number:	Calculated MW:	493 nm / 522 nm
AG4035	458 aa, 52 kDa	
	Observed MW:	
	40-50 kDa	

Applications

Tested Applications:	Positive Controls:
IF/ICC	IF/ICC : HepG2 cells,
Species Specificity:	
human, mouse, rat	

Background Information

Human carboxypeptidase N (CPN), a member of the CPN/E subfamily of "regulatory" metallo-carboxypeptidases, is an extracellular glycoprotein synthesized in the liver and secreted into the blood, where it controls the activity of vasoactive peptide hormones, growth factors and cytokines by specifically removing C-terminal basic residues. Normally, CPN circulates in blood plasma as a hetero-tetramer consisting of two 83 kDa (CPN2) domains each flanked by a 48 to 55 kDa catalytic (CPN1) domain. The C terminal region of the CPN1 subunit differs from all other family members in that it contains numerous basic residues. Proteolysis at these sites apparently happens either constitutively in the blood or during processing and secretion from the liver.

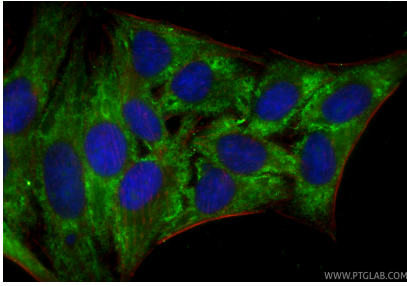
Storage

Storage:
Store at -20°C. Avoid exposure to light. Stable for one year after shipment.
Storage Buffer:
PBS with 50% glycerol, 0.05% Proclin300, 0.5% BSA, pH7.3
Aliquoting is unnecessary for -20°C storage

For technical support and original validation data for this product please contact:
T: 1 (888) 4PTGLAB (1-888-478-4522) (toll free in USA), or 1(312) 455-8498 (outside USA)
E: proteintech@ptglab.com
W: ptglab.com

This product is exclusively available under Proteintech Group brand and is not available to purchase from any other manufacturer.

Selected Validation Data



Immunofluorescent analysis of (-20°C Ethanol) fixed HepG2 cells using CoraLite® Plus 488 CPN1 antibody (CL488-84218, Clone: 241481A5) at dilution of 1:600, CL594-Phalloidin (red).