

For Research Use Only

# CoraLite® Plus 488-conjugated ASUN Recombinant antibody

Catalog Number: CL488-84252-4



## Basic Information

<b>Catalog Number:</b> CL488-84252-4	<b>GenBank Accession Number:</b> BC003081	<b>Purification Method:</b> Protein A purification
<b>Size:</b> 100ul , Concentration: 1000 ug/ml by Nanodrop;	<b>GeneID (NCBI):</b> 55726	<b>CloneNo.:</b> 241586E9
<b>Source:</b> Rabbit	<b>UNIPROT ID:</b> Q9NVM9	<b>Recommended Dilutions:</b> IF/ICC 1:50-1:500
<b>Isotype:</b> IgG	<b>Full Name:</b> chromosome 12 open reading frame 11	<b>Excitation/Emission maxima wavelengths:</b> 493 nm / 522 nm
<b>Immunogen Catalog Number:</b> AG13727	<b>Calculated MW:</b> 706 aa, 80 kDa	

## Applications

<b>Tested Applications:</b> IF/ICC	<b>Positive Controls:</b> IF/ICC : HeLa cells,
<b>Species Specificity:</b> human	

## Background Information

Asunder (ASUN) is a conserved protein that has been reported as a critical regulator of dynein localization during Drosophila spermatogenesis (PMID: 19357193). Mammalian and Drosophila ASUN proteins revealed that they are 43% identical and 64% similar. Human ASUN (also known as GCT1 or C12ORF11) promotes dynein recruitment and centrosomal tethering to the nucleus at mitotic entry (PMID: 23097494).

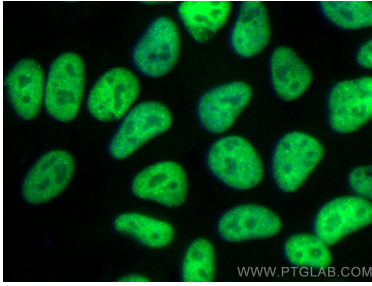
## Storage

**Storage:**  
Store at -20°C. Avoid exposure to light. Stable for one year after shipment.  
**Storage Buffer:**  
PBS with 50% Glycerol, 0.05% Proclin300, 0.5% BSA, pH 7.3.  
**Aliquoting is unnecessary for -20°C storage**

For technical support and original validation data for this product please contact:  
T: 1 (888) 4PTGLAB (1-888-478-4522) (toll free in USA), or 1(312) 455-8498 (outside USA)  
E: [proteintech@ptglab.com](mailto:proteintech@ptglab.com)  
W: [ptglab.com](http://ptglab.com)

This product is exclusively available under Proteintech Group brand and is not available to purchase from any other manufacturer.

## Selected Validation Data



Immunofluorescent analysis of (4% PFA) fixed HeLa cells using CoraLite® Plus 488 ASUN antibody (CL488-84252-4, Clone: 241586E9 ) at dilution of 1:200.