

For Research Use Only

CoraLite® Plus 488-conjugated METTL2 Recombinant antibody

Catalog Number:CL488-84257



Basic Information

Catalog Number:

CL488-84257

Size:

100ul , Concentration: 1000 µg/ml by Nanodrop;

Source:

Rabbit

Isotype:

IgG

Immunogen Catalog Number:

AG10410

GenBank Accession Number:

BC107586

GeneID (NCBI):

55798

UNIPROT ID:

Q6P1Q9

Full Name:

methyltransferase like 2B

Calculated MW:

313 aa, 36 kDa

Observed MW:

36~43 kDa

Purification Method:

Protein A purification

CloneNo.:

241490A3

Recommended Dilutions:

IF/ICC 1:50-1:500

Excitation/Emission maxima wavelengths:

493 nm / 522 nm

Applications

Tested Applications:

IF/ICC

Species Specificity:

human

Positive Controls:

IF/ICC : MCF-7 cells,

Background Information

METTL2A and METTL2B are required for the threonyl and arginyl tRNA methylation. METTL2 methyltransferase is responsible for 3-methylcytosine modification of arginine tRNAs in mammals. METTL2A and METTL2B are in higher homology 99%. This antibody detects both METTL2A and METTL2B.

Storage

Storage:

Store at -20°C. Avoid exposure to light. Stable for one year after shipment.

Storage Buffer:

PBS with 50% Glycerol, 0.05% Proclin300, 0.5% BSA, pH 7.3.

Aliquoting is unnecessary for -20°C storage

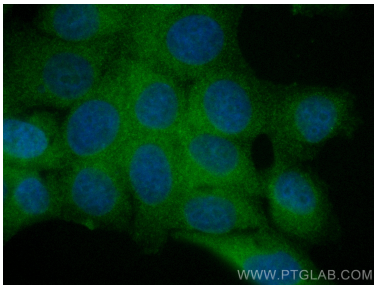
For technical support and original validation data for this product please contact:

T: 1 (888) 4PTGLAB (1-888-478-4522) (toll free in USA), or 1(312) 455-8498 (outside USA)

E: proteintech@ptglab.com
W: ptglab.com

This product is exclusively available under Proteintech Group brand and is not available to purchase from any other manufacturer.

Selected Validation Data



Immunofluorescent analysis of (4% PFA) fixed MCF-7 cells using CoraLite® Plus 488 METTL2 antibody (CL488-84257, Clone: 241490A3) at dilution of 1:200.