

For Research Use Only

CoraLite® Plus 488-conjugated NME3 Recombinant antibody

Catalog Number: CL488-84278-5



Basic Information

Catalog Number:

CL488-84278-5

Size:

100ul , Concentration: 1000 ug/ml by Nanodrop;

Source:

Rabbit

Isotype:

IgG

Immunogen Catalog Number:

AG7284

GenBank Accession Number:

BC000250

GeneID (NCBI):

4832

UNIPROT ID:

Q13232

Full Name:

non-metastatic cells 3, protein expressed in

Calculated MW:

19 kDa

Observed MW:

18 kDa

Purification Method:

Protein A purification

CloneNo.:

241585H7

Recommended Dilutions:

IF/ICC 1:50-1:500

Excitation/Emission maxima wavelengths:

493 nm / 522 nm

Applications

Tested Applications:

IF/ICC

Species Specificity:

human, rat

Positive Controls:

IF/ICC : HeLa cells,

Background Information

NME3 (NME/NM23 Nucleoside Diphosphate Kinase 3), also named as NM23-H3; DR-NM23, is a member of the nucleoside diphosphate kinase (NDPK) family that binds to the mitochondrial outer membrane to stimulate mitochondrial fusion. The depletion of NME3 will cause dysfunction in mitochondrial dynamics. NME3 has been found to facilitate DNA-repair mechanisms binds to several NPHPs, including NEK8, CEP164, and ankyrin repeat and sterile a motif domain-containing 6 (ANKS6)

Storage

Storage:

Store at -20°C. Avoid exposure to light. Stable for one year after shipment.

Storage Buffer:

PBS with 50% Glycerol, 0.05% Proclin300, 0.5% BSA, pH 7.3.

Aliquoting is unnecessary for -20°C storage

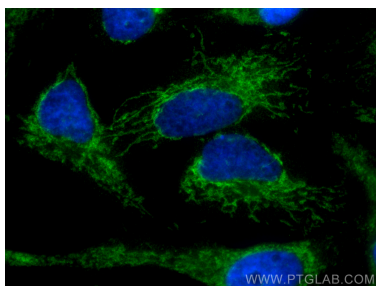
For technical support and original validation data for this product please contact:

T: 1 (888) 4PTGLAB (1-888-478-4522) (toll free in USA), or 1(312) 455-8498 (outside USA)

E: proteintech@ptglab.com
W: ptglab.com

This product is exclusively available under Proteintech Group brand and is not available to purchase from any other manufacturer.

Selected Validation Data



Immunofluorescent analysis of (4% PFA) fixed HeLa cells using Coralite® Plus 488 NME3 antibody (CL488-84278-5, Clone: 241585H7) at dilution of 1:200.