

For Research Use Only

CoraLite® Plus 488-conjugated POTEA-Specific Recombinant antibody

Catalog Number: CL488-84298



Basic Information

Catalog Number:

CL488-84298

Size:

100ul , Concentration: 1000 ug/ml by Nanodrop;

Source:

Rabbit

Isotype:

IgG

GenBank Accession Number:

NM_001002920

GeneID (NCBI):

340441

UNIPROT ID:

Q6S8J7

Full Name:

POTE ankyrin domain family, member A

Calculated MW:

56 kDa

Purification Method:

Protein A purification

CloneNo.:

241187F7

Recommended Dilutions:

IF/ICC 1:50-1:500

Excitation/Emission maxima wavelengths:

493 nm / 522 nm

Applications

Tested Applications:

IF/ICC, FC (Intra)

Species Specificity:

human

Positive Controls:

IF/ICC : A549 cells,

Background Information

POTEa, also named A26A1 and POTE8, belongs to the POTE family. POTE has an important signaling function in the reproductive system.

Storage

Storage:

Store at -20°C. Avoid exposure to light. Stable for one year after shipment.

Storage Buffer:

PBS with 50% Glycerol, 0.05% Proclin300, 0.5% BSA, pH 7.3.

Aliquoting is unnecessary for -20°C storage

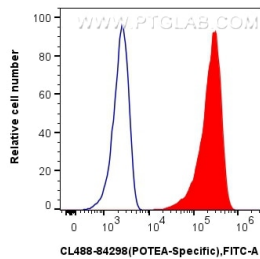
For technical support and original validation data for this product please contact:

T: 1 (888) 4PTGLAB (1-888-478-4522) (toll free in USA), or 1(312) 455-8498 (outside USA)

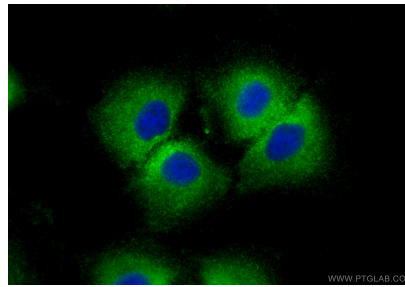
E: proteintech@ptglab.com
W: ptglab.com

This product is exclusively available under Proteintech Group brand and is not available to purchase from any other manufacturer.

Selected Validation Data



1×10^6 HeLa cells were intracellularly stained with 0.25 μ g CoraLite® Plus 488 POTEA-Specific Recombinant Antibody (CL488-84298, Clone:241187F7)(red), or 0.25 μ g Rabbit IgG Isotype Control Recombinant Antibody (98136-1-RR, Clone: 240953C9) (blue). Cells were fixed with 4% PFA and permeabilized with Intracellular Staining Permeabilization Wash Buffer.



Immunofluorescent analysis of (-20°C Methanol) fixed A549 cells using CoraLite® Plus 488 POTEA-Specific antibody (CL488-84298, Clone: 241187F7) at dilution of 1:200.