

For Research Use Only

# CoraLite® Plus 488-conjugated CRLS1-Specific Recombinant monoclonal antibody

Catalog Number: **CL488-84302-2**



## Basic Information

<b>Catalog Number:</b> CL488-84302-2	<b>GenBank Accession Number:</b> NM_019095	<b>Purification Method:</b> Protein A purification
<b>Size:</b> 100ul , Concentration: 1000 ug/ml by Nanodrop;	<b>GeneID (NCBI):</b> 54675	<b>CloneNo.:</b> 241192D1
<b>Source:</b> Rabbit	<b>UNIPROT ID:</b> Q9UJA2	<b>Recommended Dilutions:</b> IF/ICC: 1:50-1:500
<b>Isotype:</b> IgG	<b>Full Name:</b> cardiolipin synthase 1	<b>Excitation/Emission maxima wavelengths:</b> 493 nm / 522 nm
	<b>Calculated MW:</b> 33 kDa	

## Applications

<b>Tested Applications:</b> IF/ICC	<b>Positive Controls:</b> IF/ICC : HepG2 cells,
<b>Species Specificity:</b> human	

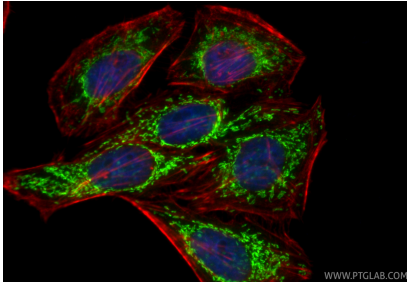
## Storage

**Storage:**  
Store at -20°C. Avoid exposure to light. Stable for one year after shipment.  
**Storage Buffer:**  
PBS with 50% glycerol, 0.05% Proclin300, 0.5% BSA, pH7.3  
Aliquoting is unnecessary for -20°C storage

For technical support and original validation data for this product please contact:  
T: 1 (888) 4PTGLAB (1-888-478-4522) (toll free in USA), or 1(312) 455-8498 (outside USA)  
E: [proteintech@ptglab.com](mailto:proteintech@ptglab.com)  
W: [ptglab.com](http://ptglab.com)

This product is exclusively available under Proteintech Group brand and is not available to purchase from any other manufacturer.

## Selected Validation Data



Immunofluorescent analysis of (4% PFA) fixed HepG2 cells using Coralite® Plus 488 CRLS1-Specific antibody (CL488-84302-2, Clone: 241192D1 ) at dilution of 1:200, CL594-phalloidin (red).