

For Research Use Only

CoraLite® Plus 488-conjugated MAP2 Recombinant antibody

Catalog Number: CL488-84306-4



Basic Information

Catalog Number: CL488-84306-4	GenBank Accession Number: BC038857	Purification Method: Protein A purification
Size: 100ul , Concentration: 1000 µg/ml by Nanodrop;	GeneID (NCBI): 4133	CloneNo.: 241653H8
Source: Rabbit	UNIPROT ID: P11137	Recommended Dilutions: IF-P: 1:50-1:500
Isotype: IgG	Full Name: microtubule-associated protein 2	Excitation/Emission maxima wavelengths: 493 nm / 522 nm
Immunogen Catalog Number: AG11580	Calculated MW: 200 kDa	
	Observed MW: 280-300 kDa, 70-85 kDa	

Applications

Tested Applications: IF-P	Positive Controls: IF-P : rat brain tissue,
Species Specificity: human, rat	

Background Information

MAP2 (microtubule-associated protein 2) is a cytoskeleton protein abundant in the brain and has an important role in neuronal morphogenesis. Multiple high MW and low MW MAP2 isoforms are expressed within the proximal segment of axons, dendrites, and cell bodies. The expression of MAP2 is regulated in both a tissue- and developmentally-specific manner. The 280 kDa MAP2B is present throughout rat brain development, and the slightly larger MAP2A appears first during the end of the second week of postnatal life. MAP2C, composed of several bands of about 70 kDa, is present during early brain development and largely disappears from the mature brain except for the retina, olfactory bulb, and cerebellum. In addition, some isoforms with lower MW around 50-60 kDa also exist. MAP2 antibodies have been widely used to mark the neuron or dendrite formation.

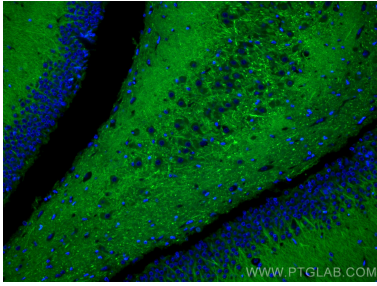
Storage

Storage:
Store at -20°C. Avoid exposure to light. Stable for one year after shipment.
Storage Buffer:
PBS with 50% glycerol, 0.05% Proclin300, 0.5% BSA, pH7.3
Aliquoting is unnecessary for -20°C storage

For technical support and original validation data for this product please contact:
T: 1 (888) 4PTGLAB (1-888-478-4522) (toll free in USA), or 1(312) 455-8498 (outside USA)
E: proteintech@ptglab.com
W: ptglab.com

This product is exclusively available under Proteintech Group brand and is not available to purchase from any other manufacturer.

Selected Validation Data



Immunofluorescent analysis of (4% PFA) fixed paraffin-embedded rat brain tissue using CoraLite® Plus 488 MAP2 antibody (CL488-84306-4, Clone: 241653H8) at dilution of 1:200. Heat mediated antigen retrieval with Tris-EDTA buffer (pH 9.0).