

For Research Use Only



CoraLite® Plus 488-conjugated ATPBD3 Recombinant monoclonal antibody

Catalog Number: **CL488-84318-4**

Basic Information

Catalog Number: CL488-84318-4	GenBank Accession Number: NM_145232	Purification Method: Protein A purification
Size: 100ul , Concentration: 1000 ug/ml by Nanodrop;	GeneID (NCBI): 90353	CloneNo.: 241630C4
Source: Rabbit	UNIPROT ID: Q7Z7A3	Recommended Dilutions: IF-P: 1:50-1:500
Isotype: IgG	Full Name: ATP binding domain 3	Excitation/Emission maxima wavelengths: 493 nm / 522 nm
Immunogen Catalog Number: AG35037	Calculated MW: 36 kDa	
	Observed MW: 35 kDa	

Applications

Tested Applications: IF-P	Positive Controls: IF-P : mouse kidney tissue,
Species Specificity: human, mouse	

Background Information

ATPBD3, also known as CTU1, NCS6, is a subunit of a highly conserved protein complex involved in the thiolation of wobble U34(PMID: 18391219). ATPBD3 directly binds tRNAs and probably acts by catalyzing the adenylation of tRNAs, an intermediate required for 2-thiolation.

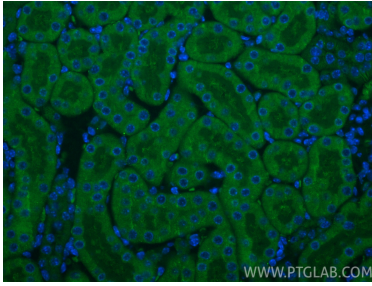
Storage

Storage:
Store at -20°C. Avoid exposure to light. Stable for one year after shipment.
Storage Buffer:
PBS with 50% glycerol, 0.05% Proclin300, 0.5% BSA, pH7.3
Aliquoting is unnecessary for -20°C storage

For technical support and original validation data for this product please contact:
T: 1 (888) 4PTGLAB (1-888-478-4522) (toll free in USA), or 1(312) 455-8498 (outside USA)
E: proteintech@ptglab.com
W: ptglab.com

This product is exclusively available under Proteintech Group brand and is not available to purchase from any other manufacturer.

Selected Validation Data



Immunofluorescent analysis of (4% PFA) fixed paraffin-embedded mouse kidney tissue using CoraLite® Plus 488 ATPBD3 antibody (CL488-84318-4, Clone: 241630C4) at dilution of 1:200. Heat mediated antigen retrieval with Tris-EDTA buffer (pH 9.0).