

For Research Use Only

CoraLite® Plus 488-conjugated Alpha-2-Macroglobulin Recombinant monoclonal antibody

Catalog Number: CL488-84347-5



Basic Information

Catalog Number:

CL488-84347-5

Size:

100ul , Concentration: 1000 ug/ml by 2 Nanodrop;

Source:

Rabbit

Isotype:

IgG

Immunogen Catalog Number:

EG1198

GenBank Accession Number:

NM_000014.6

GeneID (NCBI):

UNIPROT ID:

P01023

Full Name:

alpha-2-macroglobulin

Calculated MW:

163kDa

Observed MW:

185 kDa

Purification Method:

Protein A purification

CloneNo.:

241649D2

Recommended Dilutions:

IF/ICC: 1:50-1:500

Excitation/Emission maxima wavelengths:

493 nm / 522 nm

Applications

Tested Applications:

IF/ICC

Species Specificity:

human

Positive Controls:

IF/ICC : HepG2 cells,

Background Information

Alpha-2-Macroglobulin, also known as α 2-macroglobulin (α 2M or A2M), is a protein abundant in the plasma of vertebrates and several invertebrates. A2M is an evolutionarily conserved arm of the innate immune system. It also mediates the proliferation of T cells and macrophages. A2M acts as a nonspecific protease inhibitor involved in the host defense mechanism that inactivates both endogenous and exogenous proteases, including trypsin, thrombin and collagenase. Even though A2M is produced predominantly by the liver, it may also be expressed in the reproductive tract, heart, and brain, and may have important roles in many physiological processes and medical illnesses including Alzheimer's disease.

Storage

Storage:

Store at -20°C. Avoid exposure to light. Stable for one year after shipment.

Storage Buffer:

PBS with 50% glycerol, 0.05% Proclin300, 0.5% BSA, pH7.3

Aliquoting is unnecessary for -20°C storage

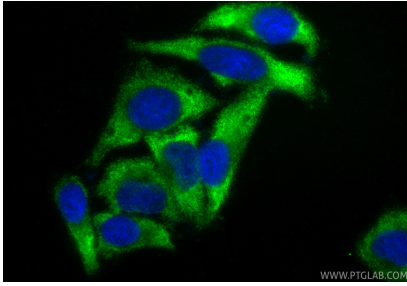
For technical support and original validation data for this product please contact:

T: 1 (888) 4PTGLAB (1-888-478-4522) (toll free in USA), or 1(312) 455-8498 (outside USA)

E: proteintech@ptglab.com
W: ptglab.com

This product is exclusively available under Proteintech Group brand and is not available to purchase from any other manufacturer.

Selected Validation Data



Immunofluorescent analysis of (-20°C Ethanol) fixed HepG2 cells using Coralite® Plus 488 Alpha-2-Macroglobulin antibody (CL488-84347-5, Clone: 241649D2) at dilution of 1:200.