

For Research Use Only

CoraLite® Plus 488-conjugated Ki-67 Recombinant antibody

Catalog Number:CL488-84432



Basic Information

Catalog Number:

CL488-84432

Size:

100ul , Concentration: 1000 ug/ml by
Nanodrop;

Source:

Rabbit

Isotype:

IgG

GenBank Accession Number:

NM_001081117.2

GeneID (NCBI):

17345

UNIPROT ID:

E9PVX6-1

Full Name:

antigen identified by monoclonal
antibody Ki 67

Calculated MW:

351kDa

Observed MW:

350 kDa

Purification Method:

Protein A purification

CloneNo.:

241768E2

Recommended Dilutions:

IF/ICC 1:50-1:500

Excitation/Emission maxima wavelengths:

493 nm / 522 nm

Applications

Tested Applications:

IF/ICC

Species Specificity:

mouse, rat

Positive Controls:

IF/ICC : NIH/3T3 cells,

Background Information

The Ki-67 protein (also known as MKI67) is a cellular marker for proliferation. Ki67 is present during all active phases of the cell cycle (G1, S, G2 and M), but is absent in resting cells (G0). Cellular content of Ki-67 protein markedly increases during cell progression through S phase of the cell cycle. Therefore, the nuclear expression of Ki67 can be evaluated to assess tumor proliferation by immunohistochemistry.

Storage

Storage:

Store at -20°C. Avoid exposure to light. Stable for one year after shipment.

Storage Buffer:

PBS with 50% Glycerol, 0.05% Proclin300, 0.5% BSA, pH 7.3.

Aliquoting is unnecessary for -20°C storage

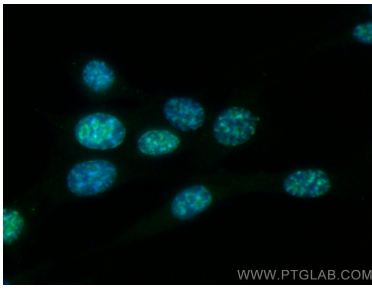
For technical support and original validation data for this product please contact:

T: 1 (888) 4PTGLAB (1-888-478-4522) (toll free
in USA), or 1(312) 455-8498 (outside USA)

E: proteintech@ptglab.com
W: ptglab.com

This product is exclusively available under Proteintech Group brand and is not available to purchase from any other manufacturer.

Selected Validation Data



Immunofluorescent analysis of (4% PFA) fixed NIH/3T3 cells using CoraLite® Plus 488 Ki-67 antibody (CL488-84432, Clone: 241768E2) at dilution of 1:200.