

For Research Use Only

CoraLite® Plus 488-conjugated M-cadherin Recombinant antibody

Catalog Number: CL488-84440-5



Basic Information

Catalog Number:

CL488-84440-5

Size:

100ul , Concentration: 1000 ug/ml by Nanodrop;

Source:

Rabbit

Isotype:

IgG

Immunogen Catalog Number:

AG25763

GenBank Accession Number:

BC008951

GeneID (NCBI):

1013

UNIPROT ID:

P55291

Full Name:

cadherin 15, type 1, M-cadherin (myotubule)

Calculated MW:

89 kDa

Observed MW:

90-130 kDa

Purification Method:

Protein A purification

CloneNo.:

241837C10

Recommended Dilutions:

IF/ICC: 1:50-1:500

Excitation/Emission maxima wavelengths:

493 nm / 522 nm

Applications

Tested Applications:

IF/ICC

Species Specificity:

human, mouse, rat

Positive Controls:

IF/ICC : H9C2 cells, C2C12 cells

Background Information

Cadherins are a family of transmembrane glycoproteins that mediate calcium-dependent cell-cell adhesion and play an important role in the maintenance of normal tissue architecture. M-cadherin (muscle cadherin), also known as CDH15 (cadherin-15), is a 124-kDa type I transmembrane glycoprotein that is highly expressed in developing skeletal muscle, satellite cells, and cerebellum (PMID: 9545347; 12052883). It associates with β -catenin and functions as a cell-cell adhesion molecule in a homophilic and specific manner (PMID: 9545347). M-cadherin is part of the myogenic program and may provide a trigger for terminal muscle differentiation (PMID: 1840697).

Storage

Storage:

Store at -20°C. Avoid exposure to light. Stable for one year after shipment.

Storage Buffer:

PBS with 50% glycerol, 0.05% Proclin300, 0.5% BSA, pH7.3

Aliquoting is unnecessary for -20°C storage

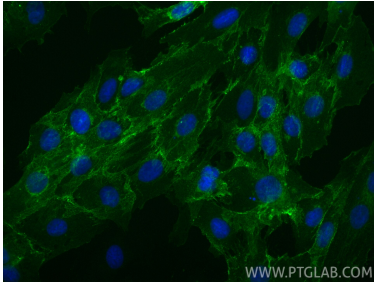
For technical support and original validation data for this product please contact:

T: 1 (888) 4PTGLAB (1-888-478-4522) (toll free in USA), or 1(312) 455-8498 (outside USA)

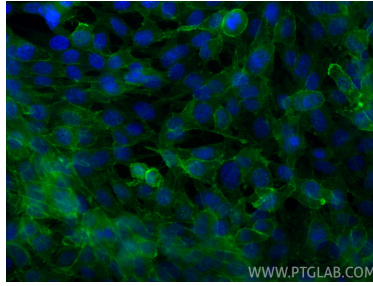
E: proteintech@ptglab.com
W: ptglab.com

This product is exclusively available under Proteintech Group brand and is not available to purchase from any other manufacturer.

Selected Validation Data



Immunofluorescent analysis of (4% PFA) fixed H9C2 cells using CoraLite® Plus 488 M-cadherin antibody (CL488-84440-5, Clone: 241837C10) at dilution of 1:200.



Immunofluorescent analysis of (-20°C Ethanol) fixed C2C12 cells using CoraLite® Plus 488 M-cadherin antibody (CL488-84440-5, Clone: 241837C10) at dilution of 1:200.