

For Research Use Only

CoraLite® Plus 488-conjugated Integrin alpha 6 Recombinant antibody

Catalog Number: CL488-84463-2



Basic Information

Catalog Number: CL488-84463-2	GenBank Accession Number: BC136456	Purification Method: Protein A purification
Size: 100ul , Concentration: 1000 ug/ml by Nanodrop;	GeneID (NCBI): 3655	CloneNo.: 241703E3
Source: Rabbit	UNIPROT ID: P23229	Recommended Dilutions: IF/ICC: 1:50-1:500
Isotype: IgG	Full Name: integrin, alpha 6	Excitation/Emission maxima wavelengths: 493 nm / 522 nm
	Calculated MW: 1073 aa, 119 kDa	

Applications

Tested Applications: IF/ICC	Positive Controls: IF/ICC : A431 cells,
Species Specificity: human	

Background Information

The integrins are a superfamily of cell adhesion receptors that bind to extracellular matrix ligands, cell-surface ligands, and soluble ligands (PMID: 17543136). They are transmembrane $\alpha\beta$ heterodimers and at least 24 distinct integrin heterodimers are formed by the combination of 18 α and eight β known subunits (PMID: 17543136; 20029421). In addition to mediating cell adhesion, integrins also play important roles in modulating signal transduction pathways that control cellular responses including migration, proliferation, differentiation, and apoptosis (PMID:19118207). Integrin alpha 6 (ITGA6, also known as CD49f or VLA-6) is a 120-kDa single-pass type 1 transmembrane glycoprotein, which combines with the beta 1 subunit (ITGB1, CD29) or beta 4 subunit (ITGB4, CD104) to form heterodimeric laminin receptors (PMID: 1976638; 2351695). Integrin alpha 6 mediates cell-to-cell and cell-to-stroma adhesion. It has also been found in many different stem cell populations and is involved in homing and connecting stem cells to their niches and regulating self-renewal mechanisms in stem cells (PMID: 28494695).

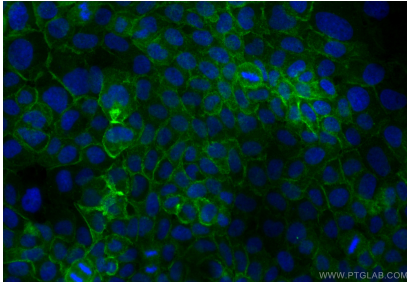
Storage

Storage:
Store at -20°C. Avoid exposure to light. Stable for one year after shipment.
Storage Buffer:
PBS with 50% glycerol, 0.05% Proclin300, 0.5% BSA, pH7.3
Aliquoting is unnecessary for -20°C storage

For technical support and original validation data for this product please contact:
T: 1 (888) 4PTGLAB (1-888-478-4522) (toll free in USA), or 1(312) 455-8498 (outside USA)
E: proteintech@ptglab.com
W: ptglab.com

This product is exclusively available under Proteintech Group brand and is not available to purchase from any other manufacturer.

Selected Validation Data



Immunofluorescent analysis of (4% PFA) fixed A431 cells using CoraLite® Plus 488 Integrin alpha 6 antibody (CL488-84463-2, Clone: 241703E3) at dilution of 1:200.